

Specifications

Recommended Operating Conditions

Operating Environment	Ambient Temperature 5 to 50°C (32 to 131°F) Humidity 70% RH or Less (No Condensation)
Standards	Display Surface - IP55 Indoor Specs. (Enclosure Closed)

Controller

Power Supply Voltage	DC24V	
Analog Input	DC 4 to 20mA (Input Impedance 250 Ω) or DC1 to 5V (Input Impedance 100k Ω) → Dip Switch Selector	Max 32 points *1
	1k Ω Potentiometer Input	Max 2 points
Digital Input	No Voltage Contact Connections - Dry Contacts (Internally Powered DC12V, Max. 25mA)	Max 8 points
Digital Output	SSR (Output AC100 ~ 240V, 1.2A or DC5 ~ 24V, 2A)	Max 24 points

*1. 1-4 inputs are available as optional analog inputs

Display

Screen size & Resolution	15.6 inches, 1366 x 768 (WXGA)
Power Supply Voltage	DC24V
Touch panel	Analog Resistive Touch Panel
Communication	HMI: 2 x RS-485 ports (1 port for HMI-CPU) 2 x Ethernet Ports CPU: 2 x RS-485 ports (1 port for HMI-CPU)
USB Ports	HMI: 2 x Type A / CPU: 1 x Type B

Control Options

Control Target	Screw Compressor Refrigeration Unit (Monocoque Condensing Unit, Chiller)			
Control Options	Compressor Capacity Control	Economizer Control	Level Control	
	High Stage Capacity Control	Evaporator Liquid Supply Control (Superheat Control)	Liquid Injection Oil Cooling Control	
	Compressor VFD Control	Chiller (Brine) Flow Control	Condenser Control	
Additional Controls	Auto Vi Control	Auto Staging (Compressor Sequencing)	Alarm & Failure Limits	Compressor Safety Limiters

The content of this brochure is subject to change without notice due to product improvements.

* "mayekawa", "MYCOM" and "MYPRO TOUCH" are registered trademarks of Mayekawa Manufacturing Co., Ltd.

* "MYPRO TOUCH" is registered trademark of Mayekawa Manufacturing Co., or Ltd or Mayekawa U.S.A. Inc..

MYCOM

Headquarters: 3 Chome-14-15 Botan, Koto City, Tokyo 135-0046

Tel: 03-3642-8181 Fax: 03-3643-7094

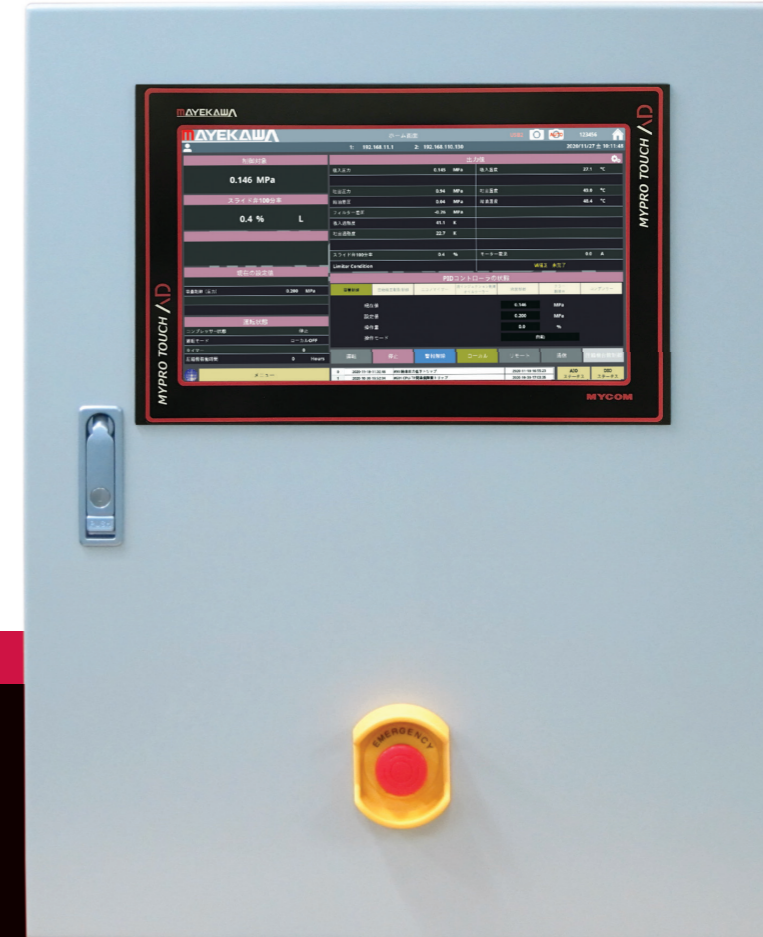
<http://www.mayekawa.com>



PD282 01002102-21.02.

Screw Compressor Unit Controller MYPRO TOUCH Series

MYPRO TOUCH / AD



MYCOM

MYPRO TOUCH AD

Introducing the new MYPRO TOUCH AD controller of the MYPRO TOUCH series. The new MYPRO TOUCH AD is designed as an intuitive interface to MYCOM industry leading compressors. The MYPRO TOUCH AD offers improve readability of screen items, maintenance functions, flexible remote communication, and other improved accessibility functions.

Main Screen

Widescreen for Easier Readability

The screen size was improved, from a 12.1" display on the MYPRO TOUCH Type-S to a 15.6" on the MYPRO TOUCH AD, this offers a better readability of the values and setpoints on the screen. The user friendly layout combined with touch gestures, such as swipe right or left, introduces a user experience not available in predecessor panels.



Main screen



Menu screen

Maintenance Log

On Screen Maintenance Scheduler

Display and adjust the maintenance scheduler, and keep log of maintenance activities such as overhaul, oil analysis, and oil change.

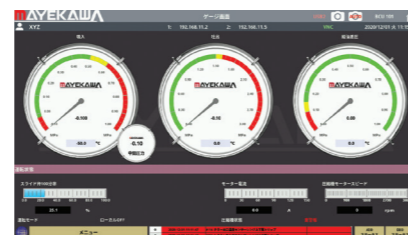
Manually modify maintenance intervals to display the appropriate maintenance warnings on the screen.



Gauge Screen

Inspect Operating Conditions at a Glance

Use the intuitively re-designed gauge screen, and adjust the different zones (red – failure, yellow - alarm, green – normal) to easily monitor the operating condition of your package.



Slide Valve Calibration Screen

Automatic Calibration of the Capacity Control Slide Valve

The automatic calibration of the slide valve has also been improved on the MYPRO TOUCH AD. If the return values for the slide valve position fall outside of spec, then display device will turn red, indicating to the user that the potentiometer, slide valve solenoids, or other components may be causing the slide valve to not calibrate properly.

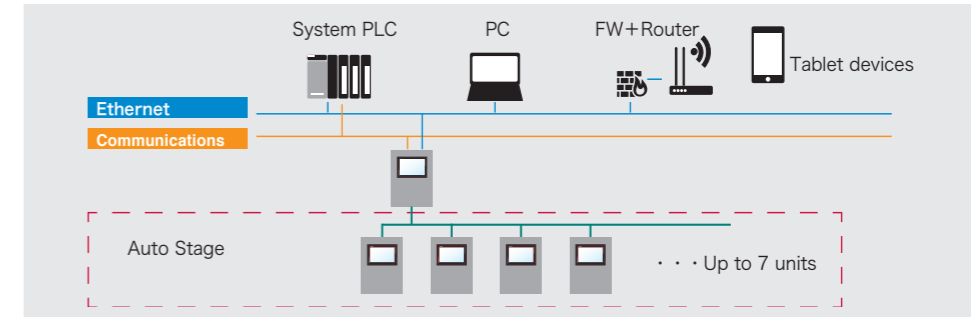


Communications

Remote Access

For added flexibility in remote communication, the MYPRO TOUCH AD can communicate using the Modbus RTU, MYCOM original protocol, and Modbus TCP etc.

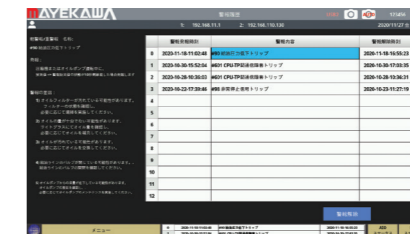
In addition, the MYPRO TOUCH AD is also equipped with a VNC viewer, allowing the user to monitor the HMI remotely.



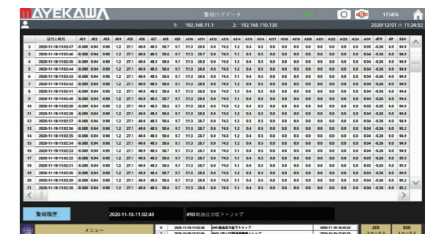
Alarm & Failure

User Friendly Alarm Troubleshooting

To quickly identify the cause of a failure or an alarm, the MYPRO TOUCH AD offers a brief description of each enunciator and a detail sensor data log for the 60 seconds leading to the failure/alarm condition. For added flexibility this data can be exported to an external USB flash drive.



Alarm history screen



Logging screen at the time of an alarm

Operator Maintenance Report

Easily Create Operator Reports

The MYPRO TOUCH AD offers an intuitive Operator Report function to aid in the creation of reports required during periodic inspections. This report can be saved into a USB flash drive for the user to easily keep a history of the maintenance performed on the unit.



Other Features

Auto Capture

Save all your setpoints and options of your controller into a USB thumb drive by performing an all capture of all the panel's setpoint and option screens.

Trend Graph Display

Display Realtime or historical data on the panel's trend graph screen.

Display up to 10 values on the screen and a maximum of 4 different analog ranges.

View Manuals and Parts Lists

Manuals and parts lists can now be displayed on the screen. Your panel's information is now available at your fingertips.

Operation log

As an added troubleshooting tool, the MYPRO TOUCH AD is equipped with an Operation Log that can be used for audit trailing. Use this feature together with the alarm log and data log, to maintain and troubleshoot your unit easily.