

## SULLAIR "B" SERIES

THIS SULLAIR "B" SERIES MANUAL WAS PRINTED IN 1981 AND WAS NEVER UPDATED BY SULLAIR THROUGH THE YEARS. MID-STATES REFRIGERATION HAS ADDED INFORMATION TO THIS PARTS MANUAL.

INFORMATION CONTAINED MAY COVER THE EQUIPMENT YOU ARE WORKING ON.

### IF NOT

PLEASE CONTACT MID-STATES REFRIGERATION SUPPLY WITH THE PACKAGE MODEL NUMBER, PACKAGE SERIAL NUMBER, UNIT PART NUMBER AND UNIT SERIAL NUMBER.

PLEASE NOTE THAT IN THESE EARLY DAYS THE SAME PART NUMBER WAS USED WHEN SUPPLIED BY DIFFERENT VENDORS. WE NEED ALL THE INFORMATION YOU CAN PROVIDE TO GET YOU THE CORRECT REPLACEMENT PART.

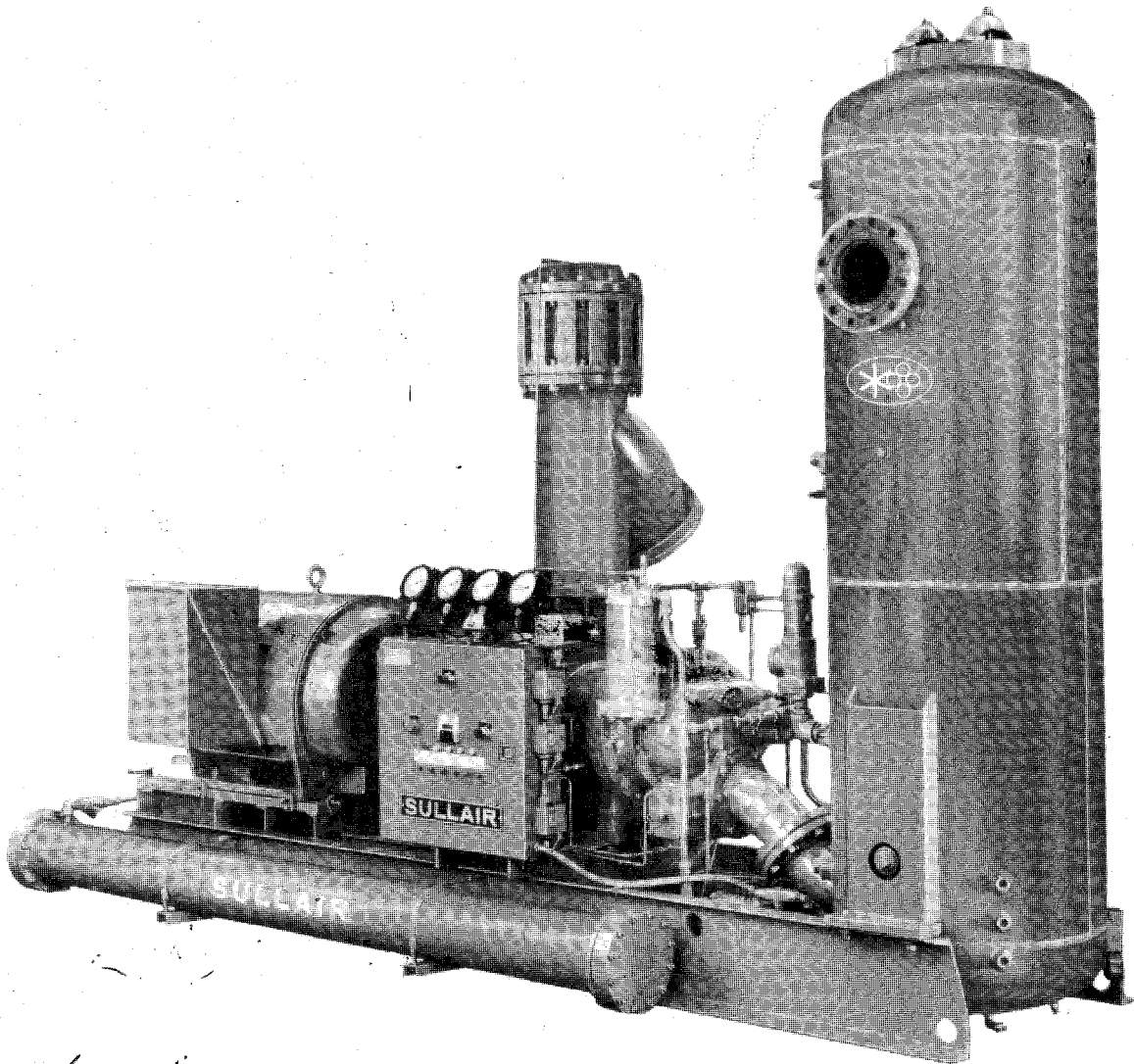
COMMON PARTS USED ON SULLAIR REFRIGERATION PACKAGES CAN ALSO BE FOUND IN THE "C" SERIES PARTS MANUAL. YOU WILL FIND SOME OF THAT INFORMATION ADDED TO THIS MANUAL.

MAY 2010

# Operators Manual

# Sullair Refrigeration Compressor

## B Series



## ILLUSTRATIONS AND PARTS LIST

### 1.1 PROCEDURE FOR ORDERING PARTS

Parts should be ordered from the nearest Sullair Representative or the Representative from whom the compressor was purchased. If for any reason parts cannot be obtained in this manner, contact the factory directly at the address or phone numbers listed below.

When ordering parts always indicate the **Serial Number** of the compressor. This can be obtained from the Bill of Lading for the compressor or from the Serial Number Plate located on the compressor. Use part numbers listed in Tables when placing your order.

The genuine Sullair service parts listed meet or exceed the demands of this compressor. Use of replacement parts other than those approved by Sullair Corporation may lead to hazardous conditions over which Sullair Corporation has no control. Such conditions include, but are not limited to, bodily injury and compressor failure.

**SULLAIR CORPORATION**  
Subsidiary of Sundstrand Corporation  
3700 East Michigan Boulevard  
Michigan City, Indiana 46360 U.S.A.  
Telephone: 1-800-SULLAIR or  
1-219-879-5451  
FAX: (219) 874-1273

**SULLAIR CORPORATION**  
Parts Distribution Division and Service Department  
1625 E. Second Street  
Michigan City, Indiana 46360 U.S.A.  
Telephone: 1-800-SULLAIR or  
1-219-879-5451  
FAX: (219) 874-1835 (Parts)  
FAX: (219) 874-1805 (Service)

Mid-States Refrigeration Supply, Inc.  
7001 North State Road 39  
La Porte, IN 46350  
Phone: 219-325-0414  
Fax: 219-324-5424  
Website: [www.midstatesrefrig.com](http://www.midstatesrefrig.com)  
Email: [mrs@midstatesrefrig.com](mailto:mrs@midstatesrefrig.com)

## TABLE OF CONTENTS

# ILLUSTRATIONS and PARTS LISTS

<b>1</b>	PROCEDURE FOR ORDERING PARTS
<b>1</b>	RECOMMENDED SPARE PARTS LIST
<b>2</b>	COMPRESSOR PACKAGE COMPONENTS
<b>6</b>	ELECTRICAL CONTROLS
<b>8</b>	ELECTRICAL CONTROLS
<b>10</b>	SHAFT SEAL ASSEMBLY — B20LB Direct Drive
<b>12</b>	SHAFT SEAL ASSEMBLY — B20LB Gear Drive
<b>14</b>	SHAFT SEAL ASSEMBLY — B25LB
<b>16</b>	SHAFT SEAL ASSEMBLY — B32SB, B32LB
<b>18</b>	COUPLINGS (FORMSPRAG AND THOMAS)
<b>22</b>	CAPACITY CONTROL BUTTERFLY VALVE AND ELECTRIC VALVE ACTUATOR ASSEMBLY
<b>24</b>	ELECTRIC VALVE ACTUATOR ASSEMBLY — "B" Series
<b>26</b>	LIQUID INJECTION OPTION
<b>28</b>	GAS/OIL SEPARATOR ELEMENT ASSEMBLY
<b>30</b>	OIL PUMP ASSEMBLY
<b>32</b>	CONVERSION KITS AVAILABLE
<b>33</b>	SERVICE KITS AVAILABLE

# KITS

# ILLUSTRATIONS AND PARTS LISTS

## PROCEDURE FOR ORDERING PARTS

Parts should be ordered from the nearest Sullair Distributor or the Contractor from whom the machine was purchased. If for any reason parts cannot be obtained in this manner, contact the factory directly at the address below.

When ordering parts always indicate the **Serial Number** of the machine. This can be obtained from the Bill of Lading for the machine or from the Serial Number Plate located on the machine.

Standard fasteners (capscrews, nuts, washers, etc.) tubing and fittings plus other standard hardware have not been included in the Parts List. These are items which can be obtained more quickly and economically from local sources.

## SULLAIR REFRIGERATION, INC.

3700 East Michigan Boulevard  
Michigan City, Indiana 46360

Telephone (219) 879-5451

Telex: 276103

## RECOMMENDED SPARE PARTS LIST

ITEM	MINIMUM REQUIREMENT	QTY.	B20LB		B25	B32 ALL
			DIRECT DRIVE	GEAR DRIVE		
oil filter cartridge	X	4	42712	42712	42712	42712
** screen, oil strainer	X	1	45460	45460	45460	45460
* screen, oil strainer	X	1	44057	44057	44057	45460
oil pump kit	X	1	1886B	1886B	1806C	1806A
oil pump coupling	X	1	225183	225183	220130	220130
oil pump shear pin	X	4	220847	220847	220847	220847
oil pressure regulator valve		1	42475	42475	42475	42475
oil pressure relief valve		1	42476	42476	42476	42476
lamp, pilot light	X	6	43386	43386	43386	43386
fuse	X	2	46151	46151	46151	46151
P <sub>1</sub> /P <sub>2</sub> switch		1	47607	47607	47607	47607
timer 1TR	X	1	46176	46176	46176	46176
resistor for timer 1TR	X	1	47090	47090	47090	47090
diaphragm P <sub>1</sub> /P <sub>2</sub>		1	49325	49325	49325	49325
timer 3TR		1	47087	47087	47087	47087
P <sub>1</sub> /P <sub>2</sub> switch, micro		1	46178	46178	46178	46178
oil pressure switch		1	42464	42464	42464	42464
resistor, pilot light		1	44846	44846	44846	44846
shaft seal kit	X	1	1881D	1881A	1885B	1817A
element, oil separator (both req'd)		4	—	43930	43930	44306
element, oil separator (both req'd)		2	43930	—	44038	44306
gasket, refrigerant strainer	X	2	248016-002	248016-002	248016-002	248016-002
gasket, oil sep. cover		1	240177	240177	240177	240177
gasket, oil sep. element		6	26427	26427	26427	26427
adhesive for element gasket		1	240179	240179	240179	240179
* gasket, oil strainer	X	6	44061	44061	44061	45461
** gasket, oil strainer	X	6	45461	45461	45461	45461
* packing, temp. regulator	X	1	240710	240710	240710	240710
** gasket, oil cooler in-out		2	46316	46316	46316	46316
** gasket, oil cooler rev.		2	240156	240156	240156	240156
** gasket, oil strainer		6	44060	44060	44060	44060

X These items should be stocked by all customers to assure continuous availability of the compressors.

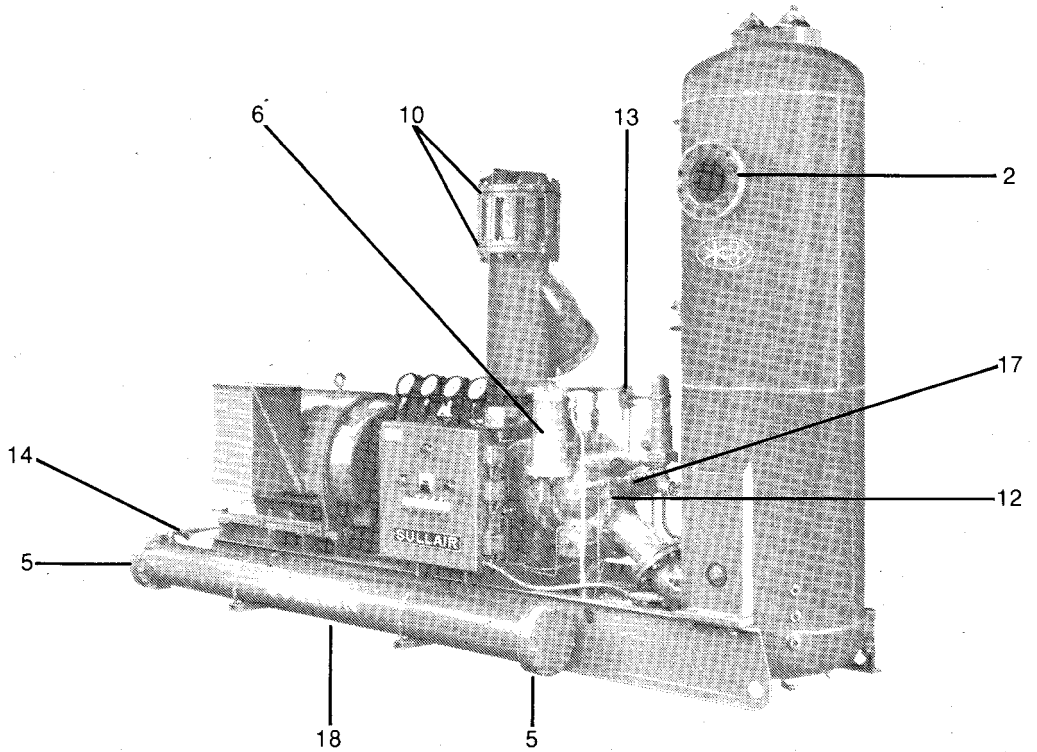
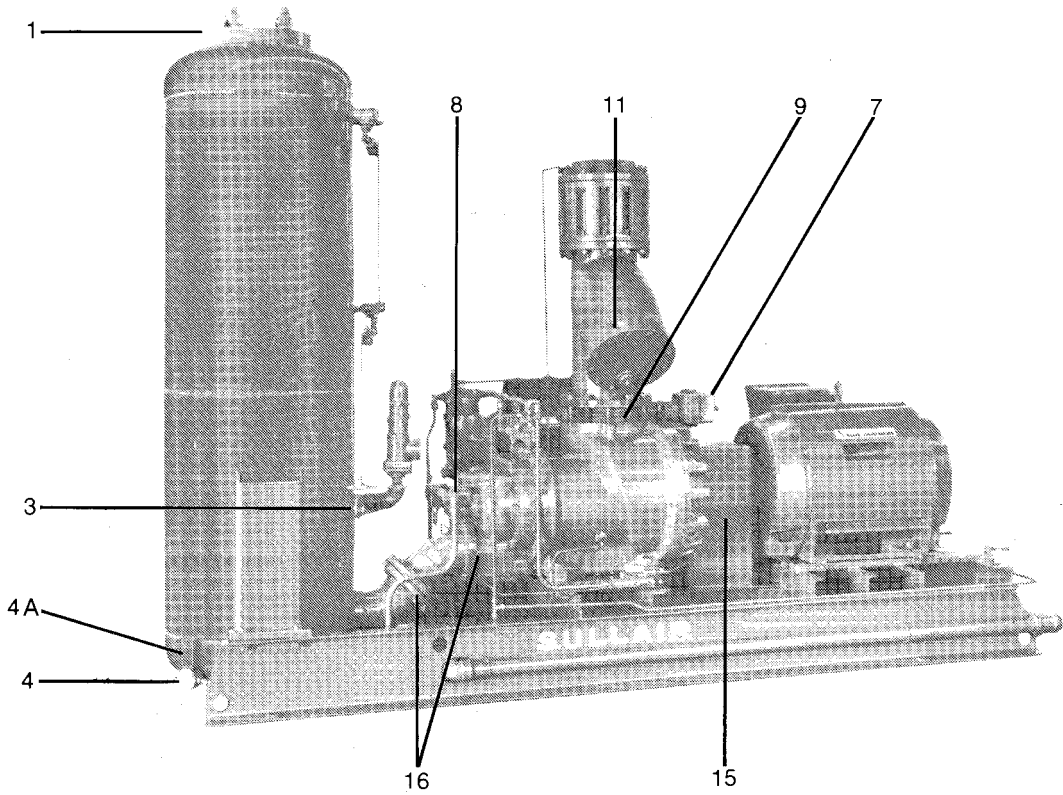
\* Liquid Injection Cooled Machines Only

\*\* Water-Cooled Machines Only

WHEN ORDERING PARTS ALWAYS INDICATE SERIAL NUMBER OF MACHINE.

# ILLUSTRATIONS AND PARTS LISTS

## COMPRESSOR PACKAGE COMPONENTS



# ILLUSTRATIONS AND PARTS LISTS

## COMPRESSOR PACKAGE COMPONENTS

<i>key number</i>	<i>description</i>	<i>equipment package model number</i>	<i>part no.</i>	<i>quantity</i>
1	gasket, oil separator access cover	all	240177	1
2	gasket, discharge line to system	B20LB 400-417 3 inch	44998	1
		B20LB 436-494 4 inch	44999	1
		B20LB 200-236 4 inch	44999	1
		B25, B32SB, B32LB 6 inch	45000	1
3	gauge, discharge temperature	all	42468	1
4	heater element 500W oil separator tank	all	42412	1
4a	thermostat for 42412 heater element	all	42589	1
5	Bonnet gaskets (see table and notes) water-cooled only	variable	* and **	
6	oil filter replacement cartridge	all	42712	1
	o ring oil filter only (included in P/N 42712)	all	826202-259	1
7	electric valve actuator assembly (see detailed Electric Valve Actuator Section)	all	45630	1
8	oil pump (see detailed Oil Pump Assembly Section)	all	—	1
9	valve, butterfly	B20 all 6 inch	242020	1
		B25, B32SB 8 inch	45629	1
		B32LB 10 inch	240155	1
10	gasket, suction line	B20 all 6 inch	45000	2
		B25, B32SB 8 inch	45001	2
		B32LB 10 inch	45002	2
11	gasket, suction strainer screen cap	all	*	1
12	oil pressure relief valve	all	42476	1
13	oil pressure regulating valve	all	42475	1
14	oil strainers, threaded	variable to different models (see reference table)	—	as supplied
15	couplings***	B20 gear drive, B25	240041	1
		B20 direct drive, B32SB, B32LB	46001	1
16	gasket, discharge pipe (B25 requires 3 gaskets)	B20 all	45000	2
		B25	223849	1
			223910	1
			45001	1
	(B32 also requires an "o" ring)	B32SB, B32LB	45001	1
			826202-267	1

(continued on next page)

\* Field fabricate gaskets from 1/16 inch sheet stock Johns Manville Type 76, or equivalent.

\*\* For other than 5/8" O.D. steel tube oil coolers, consult Sullair Refrigeration, Michigan City, Indiana for information about oil cooler part numbers and quantities. Part number is shown on name plate. If unavailable obtain cooler O.D. and length in addition to serial number on package.

\*\*\* See detailed Coupling Section.

**WHEN ORDERING PARTS, ALWAYS INDICATE SERIAL NUMBER OF MACHINE**

# ILLUSTRATIONS AND PARTS LISTS

## COMPRESSOR PACKAGE COMPONENTS (continued)

<i>key number</i>	<i>description</i>	<i>equipment package model number</i>	<i>part no.</i>	<i>quantity</i>
17	check valve, compressor oil pump	all	42615	1
18	oil coolers	variable (see table and note)	**	
19	valve, suction check	variable to different models	see table	1
20	spring, suction check valve	variable to different models	see table	1
21	strainer, suction	variable to different models	see table	1
22	screen, suction strainer	variable to different models	see table	1
23	oil level sight glass	all	41327	4

### OIL STRAINER REFERENCE TABLE (Key No. 14)

STRAINER SIZE	GASKET ONLY PART NO.	SCREEN ONLY PART NO.	CAP ONLY PART NO.	COMPLETE STRAINER PART NO.
3/8 Inch	44060	44056	240003	43325
1/2 Inch	44060	44056	240003	43056
1 1/2 Inch	44061	44057	240002	42473
2 Inch	45461	45460	240001	45459
3 Inch	44062	44058	240000	43071

### OIL COOLER REFERENCE TABLE (Key No. 18) (5/8" O.D. Steel Tube Design Only)\*\*

EQUIPMENT PACKAGE MODEL NUMBER	OIL COOLER PART NUMBER	IN/OUT HEAD GASKET	RETURN HEAD GASKET	INLET/OUTLET HEAD	REVERSING BONNET
B25	45704	46316	240156	240138	240139
B20 All, B32 All	45705	46316	240156	240138	240139

\*\* For other than 5/8" O.D. steel tube oil coolers, consult Sullair Refrigeration, Michigan City, Indiana for information about oil cooler part numbers and quantities. Part number is shown on name plate. If unavailable obtain cooler O.D. and length in addition to serial number on package.

**WHEN ORDERING PARTS, ALWAYS INDICATE SERIAL NUMBER OF MACHINE**



## OIL STRAINER REFERENCE

STRAINER SIZE (NPT)	COMPLETE STRAINER PART NUMBER	SCREEN ONLY PART NUMBER	GASKET ONLY PART NUMBER	CAP ONLY PART NUMBER
1/4"	250038-904	250038-915	250038-935	250038-925
3/8" Current Prior to Dec. 1990	250038-906 043325	250038-916 044055	250038-936 044060	250038-926 240004
1/2" Current Prior to Dec. 1990	250038-907 043056	250038-917 044056	250038-937 044060	250038-927 240003
3/4"	250038-908	250038-918	250038-938	250038-928
1" Current Prior to Jan. 1991	250038-909 240278	250038-919 240281	250038-939 240280	250038-929 240279
1 1/4" Current Prior to Jan. 1991	250038-910 049471	250038-920 049473	250038-940 049472	250038-930 N/A
1 1/2" Current Prior to Aug. 1990	250038-911 042473	250038-921 044057	250038-941 044061	250038-931 240002
2" Current Prior to Jan. 1991	250038-912 045459	250038-922 045460	250038-942 045461	250038-932 240001
2 1/2" Current Prior to Jan. 1991	250038-913 250033-813	250038-923 250038-126	250038-943 250038-125	250038-933 250038-124
3" Current Prior to Jan. 1991	250038-914 043071	250038-924 044058	250038-944 044062	250038-934 240000

**COMPRESSOR PACKAGE COMPONENTS (continued)**

**SUCTION CHECK VALVE REFERENCE TABLE (Key No. 19)**

EQUIPMENT PACKAGE MODEL NUMBER	COMPLETE CHECK VALVE PART NUMBER	SPRING PART NUMBER
B20 All	45743	24732
B25 & B32SB	45744	24062
B32LB	45745	24062

**SUCTION STRAINER REFERENCE TABLE (Key No. 21)**

EQUIPMENT PACKAGE MODEL NUMBER	COMPLETE STRAINER PART NUMBER	MUELLER SCREEN PART NUMBER	METRAFLEX & STRONG SCREEN PART NUMBER
B20 All	45747	240828-8	240825-8
B25 & B32SB	45748	240828-9	240825-9
B32LB	45749	240828-10	240825-10

**KRAISSL DUPLEX BASKET OIL STRAINER REFERENCE TABLE**

STRAINER SIZE	COMPLETE STRAINER P/N		BASKET SCREEN PART NUMBER	BASKET COVER PART NUMBER
	FLANGED	F.P.T.		
1 1/2 Inch	240894	240637	241575-001	406839-001
2 Inch	240895	240859	241575-002	406839-002
2 1/2 Inch	240896	240608	241575-003	406839-002

**WHEN ORDERING PARTS, ALWAYS INDICATE SERIAL NUMBER OF MACHINE**

## DUPLEX BASKET OIL STRAINER REFERENCE

BRAND NAME AND RATING	STRAINER SIZE	COMPLETE STRAINER PART NUMBER		BASKET/SCREEN PART NUMBER	BASKET COVER PART NUMBER	COVER GASKET PART NUMBER
		FLANGED	THREADED (NPT)			
400# PRIOR TO 3/89	1 1/2 inch	240894	240637	241575-001	406839-001	250007-477
	2 inch	240895	240859	241575-002	406839-002	250007-478
	2 1/2 inch	240896	240608	241575-002	406839-002	250007-478
	3 inch	*	*	*	*	*
	4 inch	*	*	*	*	*
125# AFTER 3/89	1 1/2 inch	250035-787	*	250031-564	02250043-655	250031-567
	2 inch	250035-789	*	250031-569	250031-570	250031-572
	2 1/2 inch	250035-791	*	250031-569	250041-549	250031-572
	3 inch	250035-793	*	02250043-649	250041-456	02250043-651
	4 inch	*	*			
250# AFTER 3/89	1 1/2 inch	250035-549	250031-535	250031-564	250031-565	250031-567
	2 inch	250035-790	*	250031-569	250031-570	250031-572
	2 1/2 inch	250031-677	250031-536	250031-569	250031-570	250031-572
	3 inch	250035-794	*	02250043-649	250041-456	02250043-651
	4 inch		*			
300# AFTER 3/89	1 1/2 inch	250035-788	*	250031-564	02250043-655	250031-567
	2 inch	02250043-658	*	250041-569	250041-549	250031-572
	2 1/2 inch	250035-792	250031-536	250031-569	250041-549	250031-572
	3 inch	250041-784	*	02250043-649	02250043-650	02250043-651
	4 inch	250035-795	*	250041-458	250041-459	250041-461

\* Refer to factory for part number.

## SUCTION CHECK VALVES - WAFER OR BUTTERFLY STYLE

- 6" P/N 250014-878 125PSI RATING 3" FLANGE TO FLANGE  
8" P/N 250014-879 125PSI RATING 3-3/4" FLANGE TO FLANGE  
10" P/N 250014-880 125PSI RATING 4-1/4" FLANGE TO FLANGE

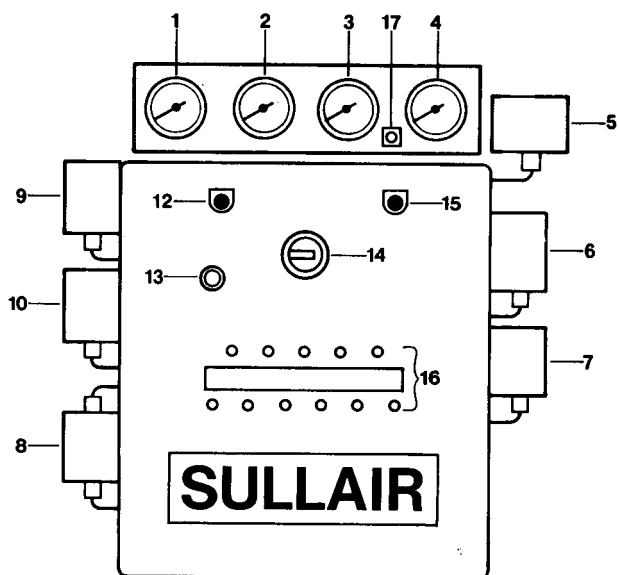
## THERMOSIPHON OIL COOLERS

- |                    |                |
|--------------------|----------------|
| B16LB GEAR DRIVE   | P/N 250028-938 |
| B20LB DIRECT DRIVE | P/N 250028-938 |
| B20LB GEAR DRIVE   | P/N 250028-938 |
| B25LB              | P/N 407941     |
| B32SB              | P/N 407941     |
| B32LB              | P/N 407941     |

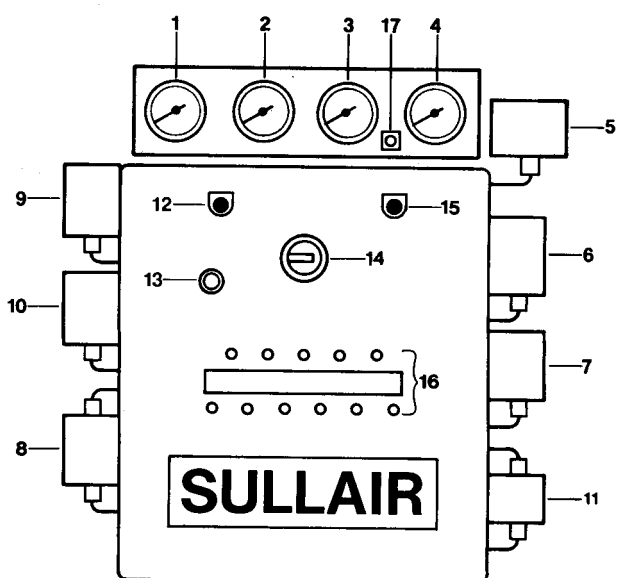
# ILLUSTRATIONS AND PARTS LISTS

## ELECTRICAL CONTROLS

B-20  
ELECTRICAL CONTROLS



B-25 and B-32  
ELECTRICAL CONTROLS



**ELECTRICAL CONTROLS**

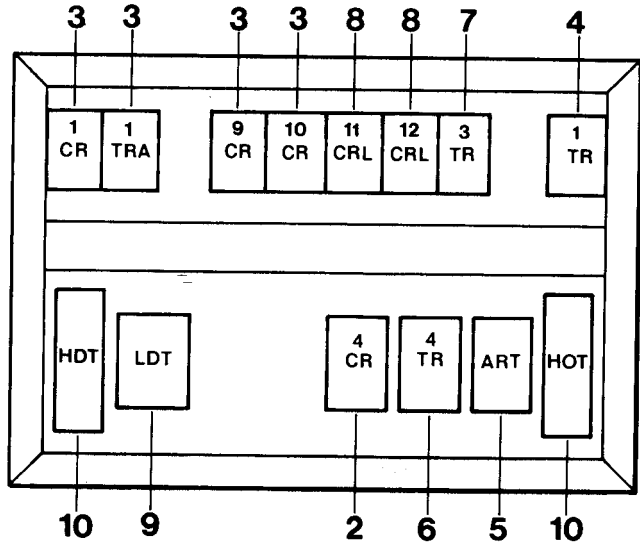
<i>key number</i>	<i>description</i>		<i>part number</i>	<i>quantity</i>
1	suction pressure gauge 30" vac – 150 PSIG	(NH3)	43556	1
2	discharge pressure gauge 30" vac – 150 PSIG	(NH3)	43556	1
3	oil pressure gauge 30" vac – 150 PSIG	(NH3)	43556	1
4	bearing oil temp. gauge (all machines)		42471	1
5	P <sub>1</sub> /P <sub>2</sub> switch, 20" vac – 50 PSI U.E.		47607	1
6	HSP switch, Penn 20" vac – 100 PSI		42888	1
7	LSP switch, Penn 20" vac – 100 PSI		47138	1
8	LOP switch, U.E. 5 – 70 PSI		42464	1
9	HDP switch, Penn 50 – 450 PSI man.		41442	1
10	LIP switch, Penn 20" vac – 100 PSI		42888	1
11	SOP switch, Penn 0 – 70 PSI		46923	1
12	switch, selector –0– push		47097	1
	contact block 2 N.O.		47096	2
	contact block 1 N.O., 1 N.C.		47095	1
13	stop button		45494	1
14	hourmeter		42988	1
15	switch, sel-rotto-push 3 pos.		47088	1
	contact block 2 N.O.		47096	1
	contact block 1 N.O., 1 N.C.		47095	2
16	pilot lights lamp holder		43383	11
	resistor required		44846	1
	bulb lamp only		43386	11
	lens red		43384	6
	lens green		43385	1
	lens amber		47016	4
	nameplate		47094	1
17	valve, 3 way 1/4"		241239	1

**WHEN ORDERING PARTS, ALWAYS INDICATE SERIAL NUMBER OF MACHINE**

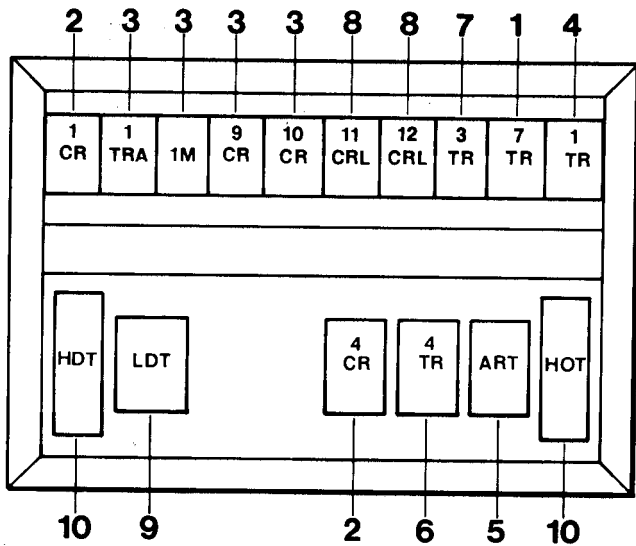
# ILLUSTRATIONS AND PARTS LISTS

## ELECTRICAL CONTROLS

B-20  
ELECTRICAL CONTROLS



B-25 and B-32  
ELECTRICAL CONTROLS



## ELECTRICAL CONTROLS

<i>key number</i>	<i>description</i>	<i>part number</i>	<i>quantity</i>
1	timer relay, 7TR, 180 sec., Potter Brumfield	44270	1
	socket for 7TR, Potter Brumfield	43388	1
2	control relay, 1CR, 4CR, Allen Bradley	45437	2
	300 V top deck for 4CR, Allen Bradley	45438	1
3	control relay (TRA, 1M, 3CR, 9CR, 10CR) Potter Brumfield	45496	4
	control relay socket for 1TRA, 1M, 3CR, 9CR, 10CR	45497	4
4	timing relay, 1TR, Omnetics (Fixed Resistor)	46176	1
	resistor required .68 meg. OHM, 1/4 watt.	47090	1
5	anti-recycle timer, 0-30 min., Eagle	46177	1
6	timer 4TR, 2-60 sec., Allen Bradley	46362	1
7	timing relay 3TR, Potter Brumfield	47087	1
	socket for 3TR, Potter Brumfield	43388	1
8	latching relay, 11CRL, 12 CRL	47734	2
9	low discharge temperature switch	46546	1*
	probe, used with key no. 9	46521	1*
10	H.D.T., H.O.T. switch, manual reset, Penn	45417	2
	auto reset, Penn (option)	42589	2

\* For liquid refrigerant cooling of oil design, see page 26 and 27 also.

NOTE: Special ordered equipment may vary in component location and quantity.

---

**WHEN ORDERING PARTS, ALWAYS INDICATE SERIAL NUMBER OF MACHINE**

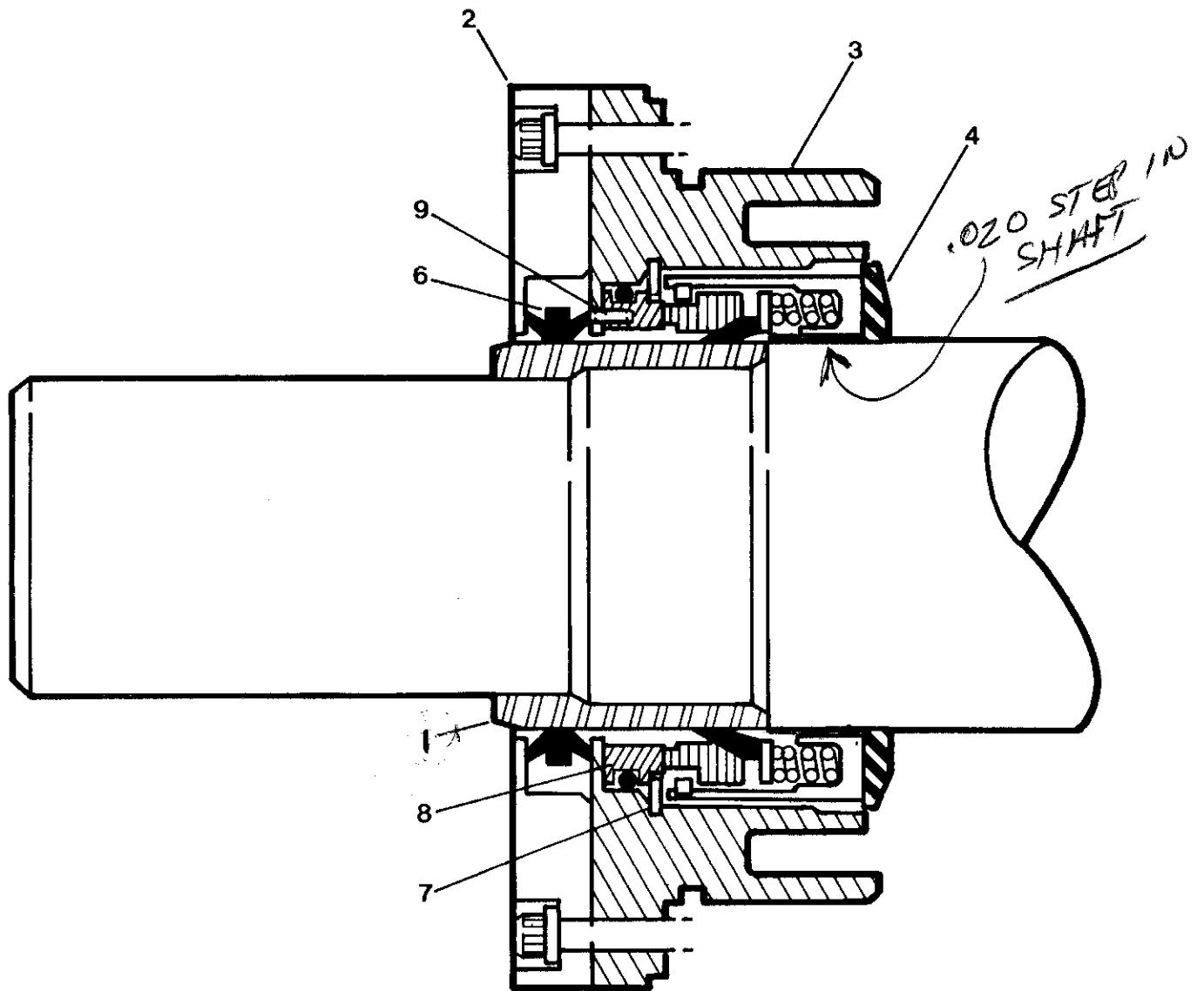


## B16 GEAR DRIVE

<u>UNIT PART NUMBER</u>	<u>SHAFT SEAL KIT NUMBER</u>
068031-001	601938-001
251339-001	601938-001
251600-001	601938-001
251601-001	601938-001
251871-001	601938-001
252026-001	02250057-626
252027-001	02250057-626

# ILLUSTRATIONS AND PARTS LISTS

## SHAFT SEAL ASSEMBLY — B20LB Direct Drive



**SHAFT SEAL ASSEMBLY — B20LB Direct Drive**

<i>key number</i>	<i>description</i>	<i>part number</i>	<i>quantity</i>
1	shaft seal sleeve	224251	1
2	"v" ring cover	224250	1
3	shaft seal housing	224249	1
4	seal ring	224252	1
5	shaft seal repair kit (includes key numbers 6, 7, 8, 9, 10, 11 & 12)	1881D	1
6	• "v" ring	499044-090	2
7	• retainer ring	241968	1
8	• shaft seal	241894	1
9	• pin	827502-025	1
10	• plastic gasket adhesive (not shown)	5910-006	2
11	• cover gasket (not shown)	225179	1
12	• "o" ring 6" x 1/8" (not shown)	826202-258	1

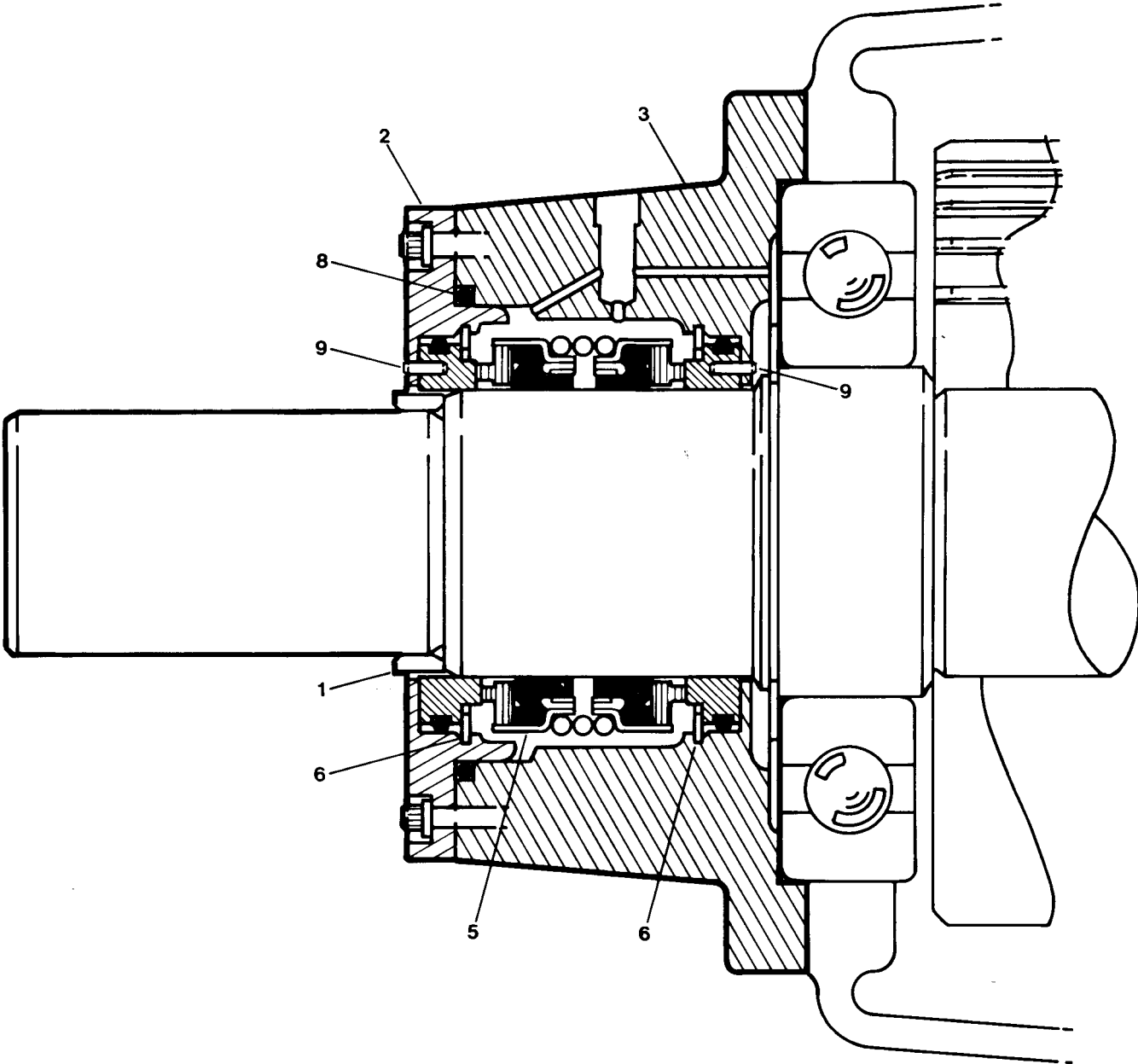
**WHEN ORDERING PARTS, ALWAYS INDICATE SERIAL NUMBER OF MACHINE**

**B20 DIRECT DRIVE**

<b><u>UNIT PART NUMBER</u></b>	<b><u>SHAFT SEAL KIT NUMBER</u></b>
02250116-196	001881E
061954-202	001881E
061954-212	001881E

# ILLUSTRATIONS AND PARTS LISTS

## SHAFT SEAL ASSEMBLY — B20LB Gear Drive



# ILLUSTRATIONS AND PARTS LISTS

## SHAFT SEAL ASSEMBLY — B20LB Gear Drive

key number	description	part number	quantity
1	input shaft spacer	223912	1
2	seal housing cover	223892	1
3	seal housing	223891	1
4	shaft seal repair kit (includes key numbers 5, 6, 7, 8 & 9)	1881A	1
5	• shaft seal	241726	1
6	• retainer ring	42672	2
7	• seal housing gasket (not shown)	24200	1
8	• "o" ring, 4" x 1/8"	826202-242	1
9	• pin	827502-038	2

**WHEN ORDERING PARTS, ALWAYS INDICATE SERIAL NUMBER OF MACHINE**

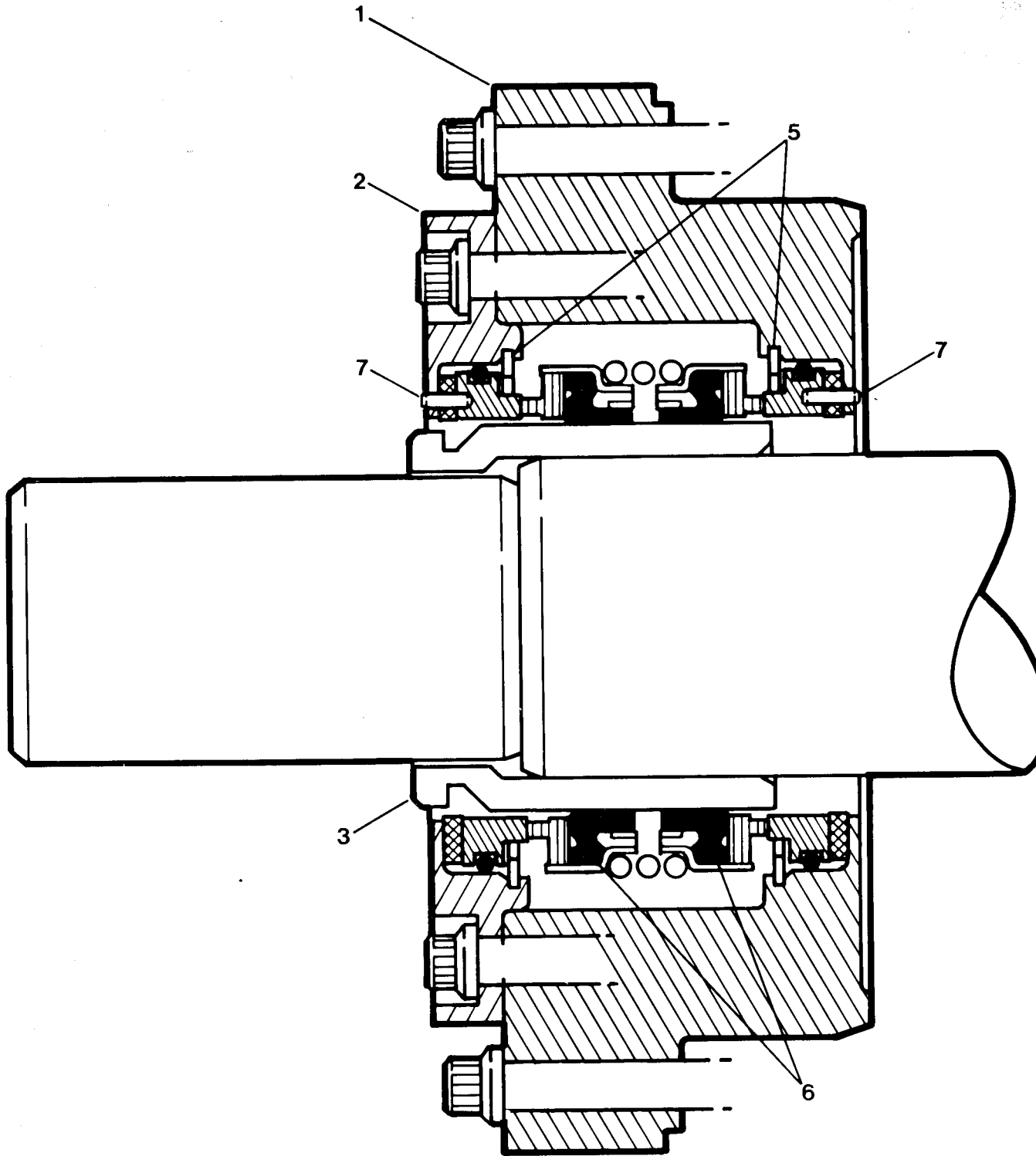
### B20 GEAR DRIVE

<u>UNIT PART NUMBER</u>	<u>SHAFT SEAL KIT NUMBER</u>
02250083-516	02250083-525
02250083-517	02250083-525
02250084-097	02250083-525
02250086-134	02250083-525
02250086-136	02250083-525
02250086-138	02250083-525
02250110-244	02250083-525
062106-203	001881A
062119-203	001881A
062119-213	001881A
062121-203	001881A
062121-230	001881A
254404-004	001881A

**NOTE: 001881A KITS COULD CONTAIN A DIFFERENT GASKET, YOU COULD NEED A BEARING SHIM KIT P/N 024705. INPUT SHAFT END PLAY SHOULD BE .004 TO .006**

# ILLUSTRATIONS AND PARTS LISTS

## SHAFT SEAL ASSEMBLY — B25LB



# ILLUSTRATIONS AND PARTS LISTS

## SHAFT SEAL ASSEMBLY — B25LB

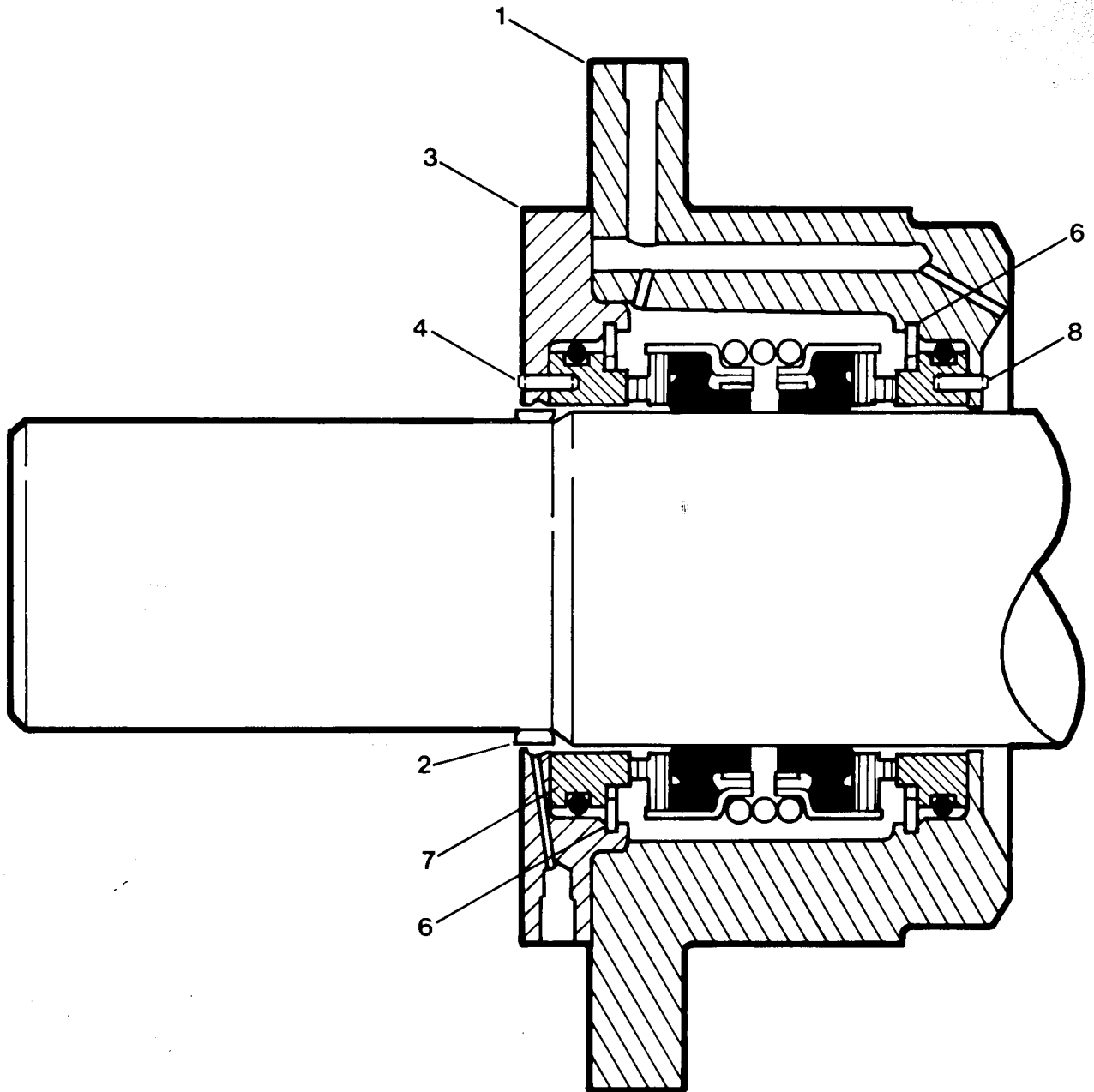
<i>key number</i>	<i>description</i>	<i>part number</i>	<i>quantity</i>
1	shaft seal housing	224090	1
2	shaft seal cover	224091	1
3	rotor spacer	224092	1
4	shaft seal repair kit (includes key numbers 5, 6, 7 & 8)	1885B	1
5	• retaining ring	41134	2
6	• shaft seal	240711	1
7	• pin	827502-025	2
8	• plastic gasket adhesive (not shown)	5910-006	1

**WHEN ORDERING PARTS, ALWAYS INDICATE SERIAL NUMBER OF MACHINE**

<u>UNIT PART NUMBER</u>	<u>B25 SHAFT SEAL KIT NUMBER</u>
008732-001	001885B
008802-003	602297-001
061856-103	001885B
066314-103	001885B
250741-003	602297-001
252310-001	602297-001
252311-001	602297-001
252312-001	602297-001

# ILLUSTRATIONS AND PARTS LISTS

## SHAFT SEAL ASSEMBLY — B32SB, B32LB





# ILLUSTRATIONS AND PARTS LISTS

## SHAFT SEAL ASSEMBLY — B32SB, B32LB

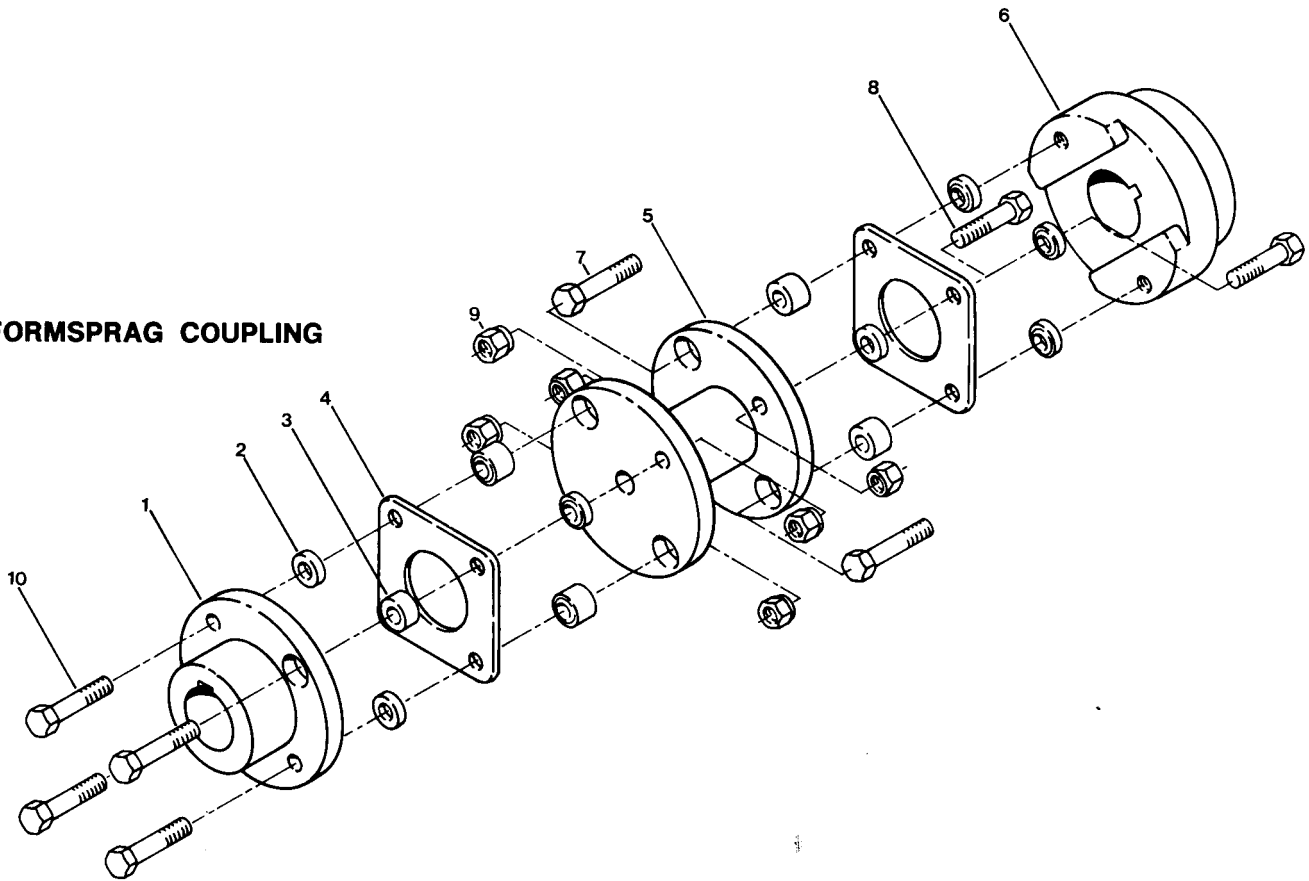
<i>key number</i>	<i>description</i>	<i>part number</i>	<i>quantity</i>
1	male inlet bearing retainer	221694	1
2	shaft spacer	221695	1
3	male inlet cover	221697	1
4	pin	499064-806	1
5	shaft seal repair kit (includes key numbers 6, 7, 8, 9 & 10)	1817A	1
6	• retaining ring	41134	2
7	• shaft seal	240711	1
8	• pin	827502-025	1
9	• pin (not shown)	827502-050	1
10	• plastic gasket adhesive (not shown)	5910-006	1

**WHEN ORDERING PARTS, ALWAYS INDICATE SERIAL NUMBER OF MACHINE**

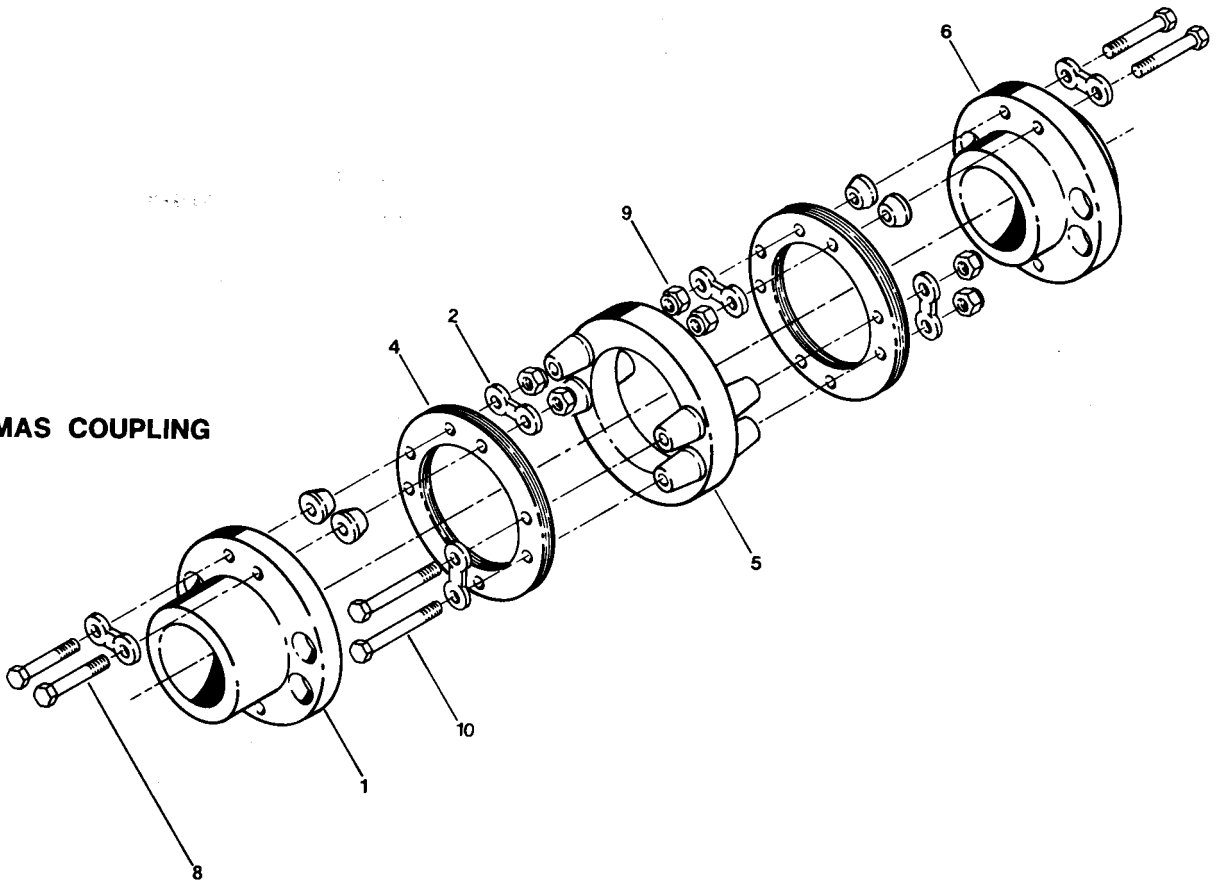
<u>UNIT PART NUMBER</u>	<u>B32 SHAFT SEAL KIT NUMBER</u>
006659-001	001817A
006660-001	001817A
008342-001	001817A
008413-001	001817A
008714-001	001817A
008715-001	001817A
008715-003	18033
008716-001	001817A
060475-300	001817A
069221-1	001817A
069551-300	001817A

# ILLUSTRATIONS AND PARTS LISTS

## FORMSPRAG COUPLING



## THOMAS COUPLING



FORMSPRAG AND THOMAS COUPLING

key number	description	model	Formsprag part number	qty.	Thomas part number	qty.
1a	coupling kit* (includes key numbers 1 thru 10)	B20 direct drive	46001	1	46001	1
		B32 all				
		B20 gear drive	240041	1	240041	1
		B25				
1b	flex element replacement kit (includes key numbers 2, 3, 4, 7, 8, 9 and 10)	B20 direct drive	1905	1	1902	1
		B32 all				
		B20 gear drive	1907	1	1904	1
		B25				
1	hub*	B20 direct drive	incl. in #6		242333	1
		B32 all				
		B20 gear drive	240099	2	242332	2
		B25				
2	thin element washer	B20 direct drive	***	12	***	12
		B32 all				
		B20 gear drive	***	8	***	12
		B25				
3	thick element washer	B20 direct drive	***	4	not used	
		B32 all	†			
		B20 gear drive	***	8	not used	
		B25				
4	flex element pack**	B20 direct drive	***	2	***	2
		B32 all				
		B20 gear drive	***	2	***	2
		B25				
5	spacer	B20 direct drive	240103	1	242336	1
		B32 all				
		B20 gear drive	240102	1	242337	1
		B25				

(continued on next page)

\* Hub styles will differ between certain model series.

For Formsprag Couplings:

Coupling part number 240041, hubs are as item number 1.

Coupling part number 46001, hubs are as item number 6.

For Thomas Couplings:

Coupling part number 46001, hubs are as shown.

Coupling part number 240041, hubs are as item number 1.

\*\* For replacing flex elements, 2 element packs are required. Each pack contains thin flexible blades, all of which must be assembled as a pack.

\*\*\* Not available as an individual part. Included in flex element replacement kit.

WHEN ORDERING PARTS, ALWAYS INDICATE SERIAL NUMBER OF MACHINE

## FORMSPRAG AND THOMAS COUPLING (continued)

<i>key number</i>	<i>description</i>	<i>model</i>	<i>Formsprag part number</i>	<i>qty.</i>	<i>Thomas part number</i>	<i>qty.</i>
6	hub*	B20 direct drive B32 all B20 gear drive B25	240100 incl. in #1	2	242339 incl. in #1	1
7	bolt (hub)	B20 direct drive B32 all B20 gear drive B25	*** incl. in #8	4	not used not used	
8 and 9	bolt and nut	B20 direct drive B32 all B20 gear drive B25	*** ***	4 8	*** ***	8 8
10 and 9	bolt and nut	B20 direct drive B32 all B20 gear drive B25	incl. in #8 incl. in #8		*** ***	4 4

\* Hub styles will differ between certain model series.

For Formsprag Couplings:

Coupling part number 240041, hubs are as item number 1.

Coupling part number 46001, hubs are as item number 6.

For Thomas Couplings:

Coupling part number 46001, hubs are as shown.

Coupling part number 240041, hubs are as item number 1.

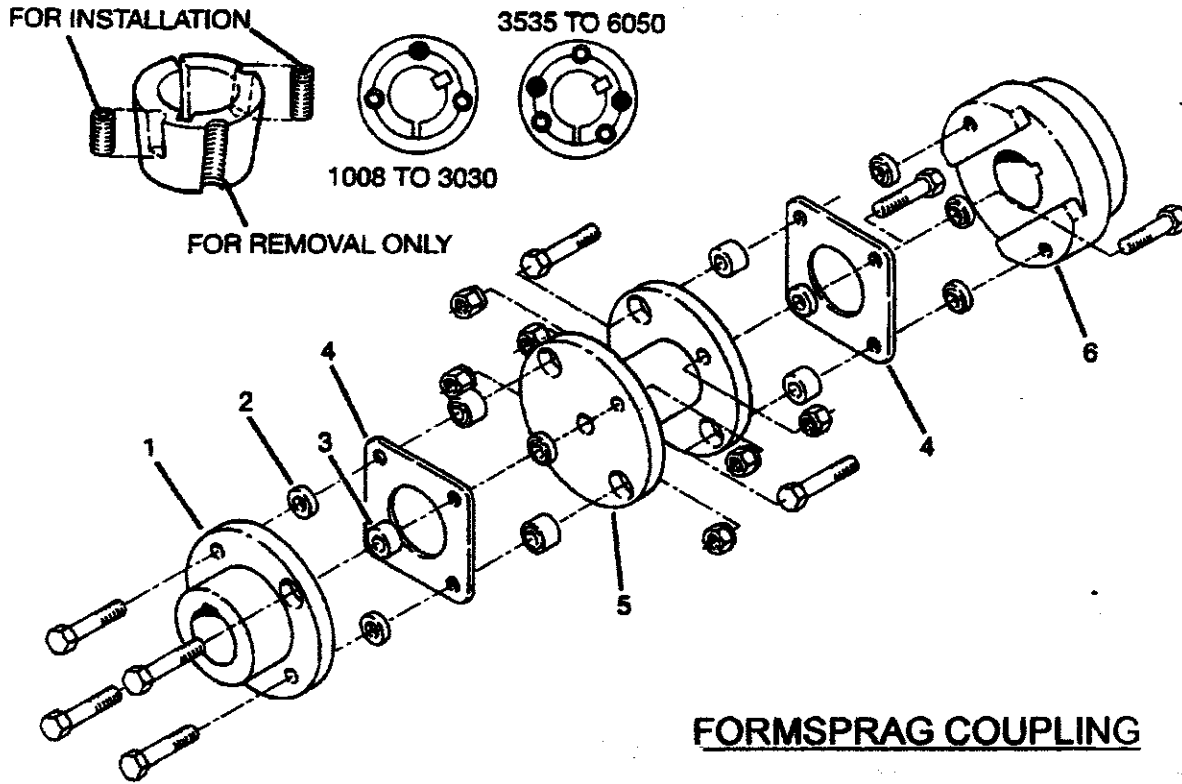
\*\* For replacing flex elements, 2 element packs are required. Each pack contains thin flexible blades, all of which must be assembled as a pack.

\*\*\* Not available as an individual part. Included in flex element replacement kit.

**WHEN ORDERING PARTS, ALWAYS INDICATE SERIAL NUMBER OF MACHINE**

# ILLUSTRATIONS AND PARTS LIST

## COUPLING ASSEMBLY – STYLE 1 TAPER LOCK BUSHING



### FORMSPRAG COUPLING

HUB STYLES WILL DIFFER FROM ONE MODEL SERIES TO THE NEXT  
 16 SERIES HUBS ARE AS ITEM NO. 1 WITH Q.D. TAPERED BUSHINGS.  
 20 SERIES HUBS ARE AS ITEM NO. 1 WITH Q.D. TAPERED BUSHINGS.  
 25 SERIES HUBS ARE AS ITEMS NO. 6. WITH TAPERLOCK BUSHINGS.

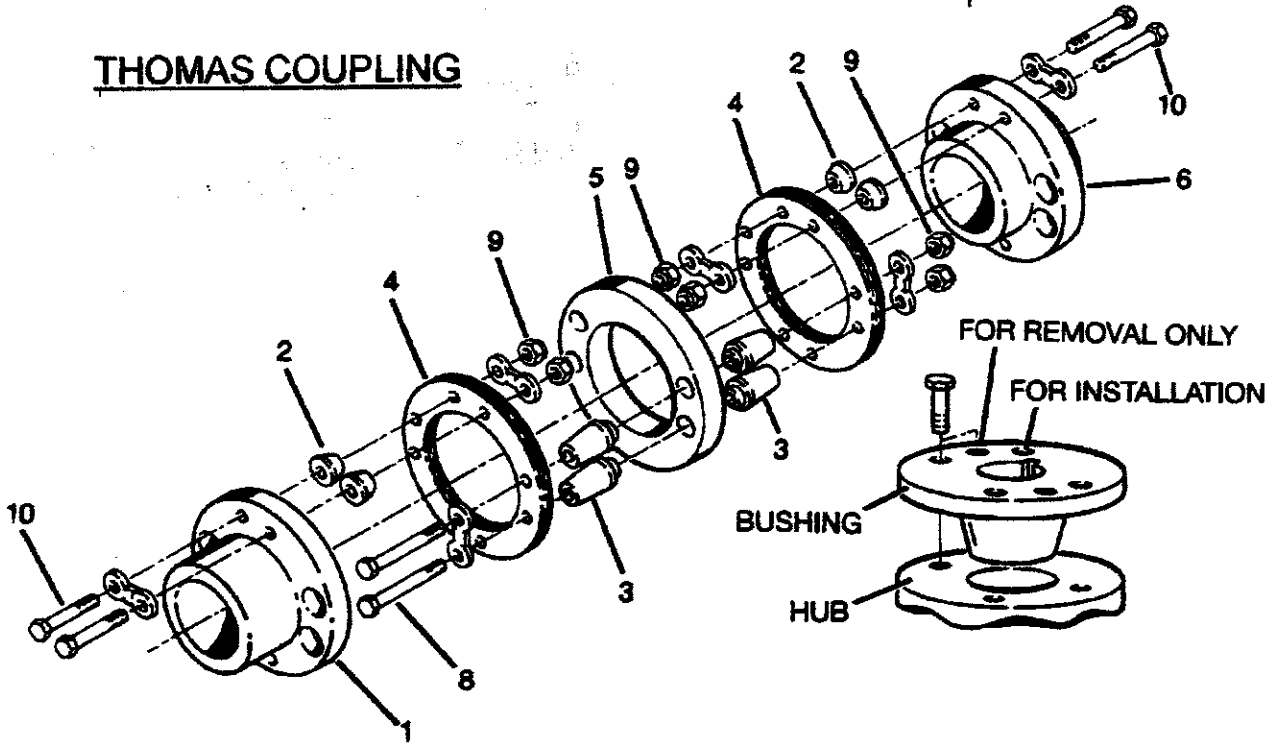
### TAPERLOCK BUSHING TIGHTENING TORQUES

BUSHING NO.	SCREWS	TORQUE	
		lb.-in.	Nm
1008, 1108	¼" Set Screws	55	6
1210, 1215, 1310	⅜" Set Screws	175	20
1610, 1615	⅜" Set Screws	175	20
2012	⅞" Set Screws	280	30
2517, 2525	½" Set Screws	438	50
3020, 3030	⅝" Set Screws	800	90
3535	½" Cap Screws	1000	115

# ILLUSTRATIONS AND PARTS LIST

## COUPLING ASSEMBLY (Cont'd.) - STYLE 2 QD BUSHING

### THOMAS COUPLING

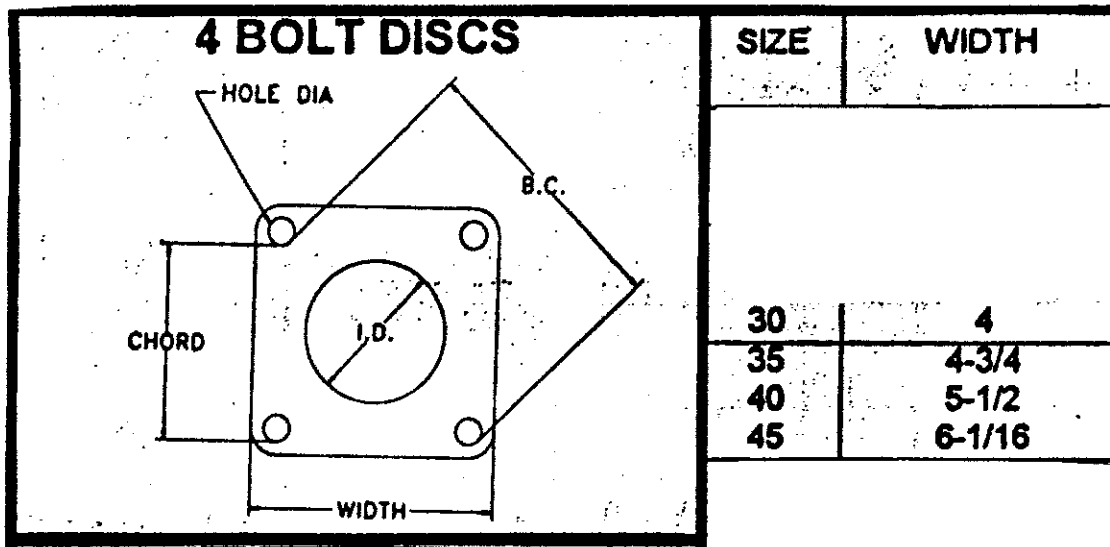


### QD BUSHING TIGHTENING TORQUES

BUSHING NO.	SCREWS	TORQUE	
		LB.-IN.	Nm
SD	1/4 x 1-7/8	108	12
SK	5/16 x 2	180	20
SF	3/8 x 2	360	41
E	1/2 x 2-3/4	720	81
F	7/16 x 3-5/8	900	102

**FORMSPRAG COUPLING**

**HOW TO DETERMINE THE SIZE**



**FORMSPRAG COUPLING COMPLETE REPAIR KIT**

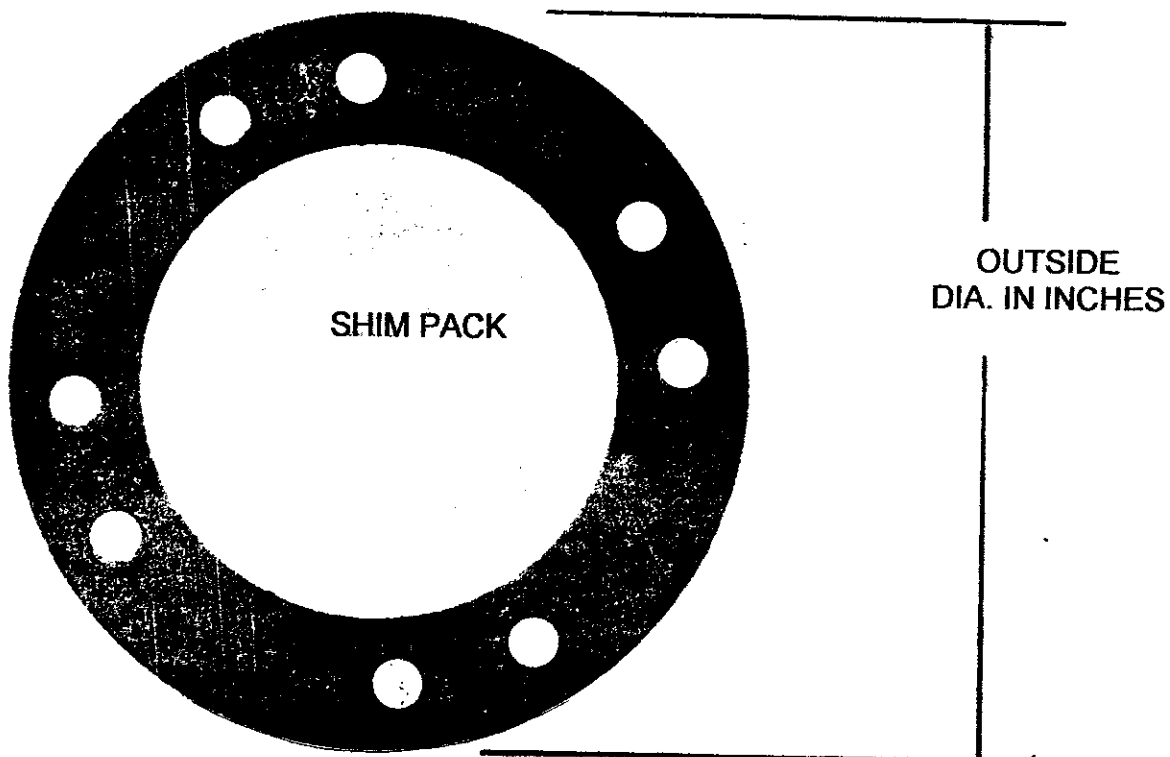
SIZE	KIT PART NO.
30	018654-001
35	018654-002
40	018654-003

**FORMSPRAG SHIM PACK ONLY (NEED 2 PER COUPLING)**

SIZE	PART NO.
30	240089
35	240090
40	240091

THOMAS COUPLING HAS A ROUND SHIM PACK

HOW TO DETERMINE THE SIZE



SHIM PACK DIA. IN INCHES	SIZE
5-3/4"	226
7-3/4"	301
9-1/8"	351

COUPLING DIA. IN INCHES	SIZE
6.06"	226
8.0"	301
9.38"	351

THOMAS COUPLING REPAIR KIT

SIZE	PART NO.
226	018655-001
301	018655-002
351	018655-003

THOMAS SHIM PACK ONLY ( NEED 2 PER COUPLING)

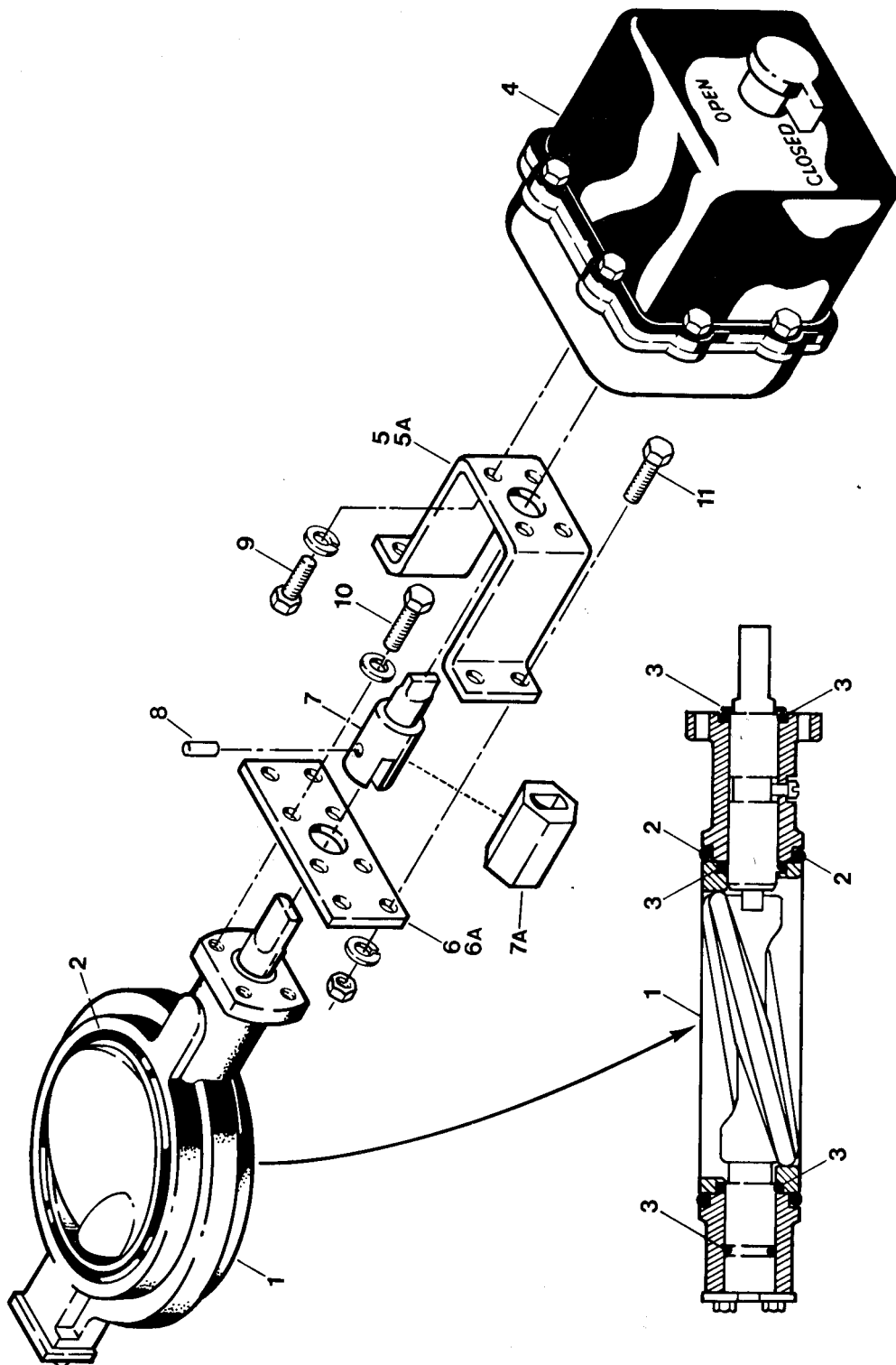
SIZE	PART NO.
226	242326
301	242327
351	242328



# ILLUSTRATIONS AND PARTS LISTS

## CAPACITY CONTROL BUTTERFLY VALVE AND ELECTRIC VALVE ACTUATOR ASSEMBLY

**THIS IS THE ORIGINAL VALVE & ACTUATOR (2 MOTORS)**



**THIS IS THE ORIGINAL VALVE & ACTUATOR (2 MOTORS)**

**CAPACITY CONTROL BUTTERFLY VALVE AND ELECTRIC VALVE ACTUATOR ASSEMBLY**

<i>key number</i>	<i>description</i>	<i>B20LB, ALL packages</i>	<i>B25, B32SB packages</i>	<i>B32LB packages</i>	<i>qty.</i>
1	butterfly valve* ***	242020	45629	240155	1
2	body seal replacement kit	1923-001	1923-002	1923-003	1
3	complete seal replacement kit (includes item no. 2)	1898-001	1898-002	1898-003	1
4	electric valve actuator, see assembly section***	45630	45630	45630	1
***	For actuators with female drive shaft end:				
5	actuator support bracket	221670	221670	221863	1
6	actuator bracket plate	221669	221669	221862	1
7	actuator drive coupling	221668	221668	221861	1
***	For actuator with male drive shaft end:				
5A	actuator support bracket	232806	232806	232806	1
6A	actuator bracket plate	232807	232807	232808	1
7A	actuator drive coupling	232809-001	232809-001	232809-002	1
8	roll pin, 1/8" x 1"***	827402-100	827402-100	827402-100	1
9	hex head capscrew gr.5 1/4-20 x 5/8" lg. **	828604-062	828604-062	828604-062	4
**	springlock washer 1/4"	837504-062	837504-062	837504-062	4
10	hex head capscrew gr.5 3/8-16 x 1" lg. **	828606-100	828606-100	828606-100	4
**	springlock washer 3/8"	837506-094	837506-094	837506-094	4
11	hex head capscrew gr.5 3/8-16 x 3/4" lg. **	828606-075	828606-075	828606-075	4
**	springlock washer 3/8"	837506-094	837506-094	837506-094	4
	hex nut 3/8-16	824206-337	824206-337	824206-377	4

\* The butterfly valve must be removed from the compressor prior to servicing. Failure to do so will result in components falling into the compressor rotors.

\*\* Standard hardware item, may be purchased locally.

\*\*\* Verify actuator drive shaft end design before ordering replacement parts. Items #5, #6 and #7 differ.

**WHEN ORDERING PARTS, ALWAYS INDICATE SERIAL NUMBER OF MACHINE**

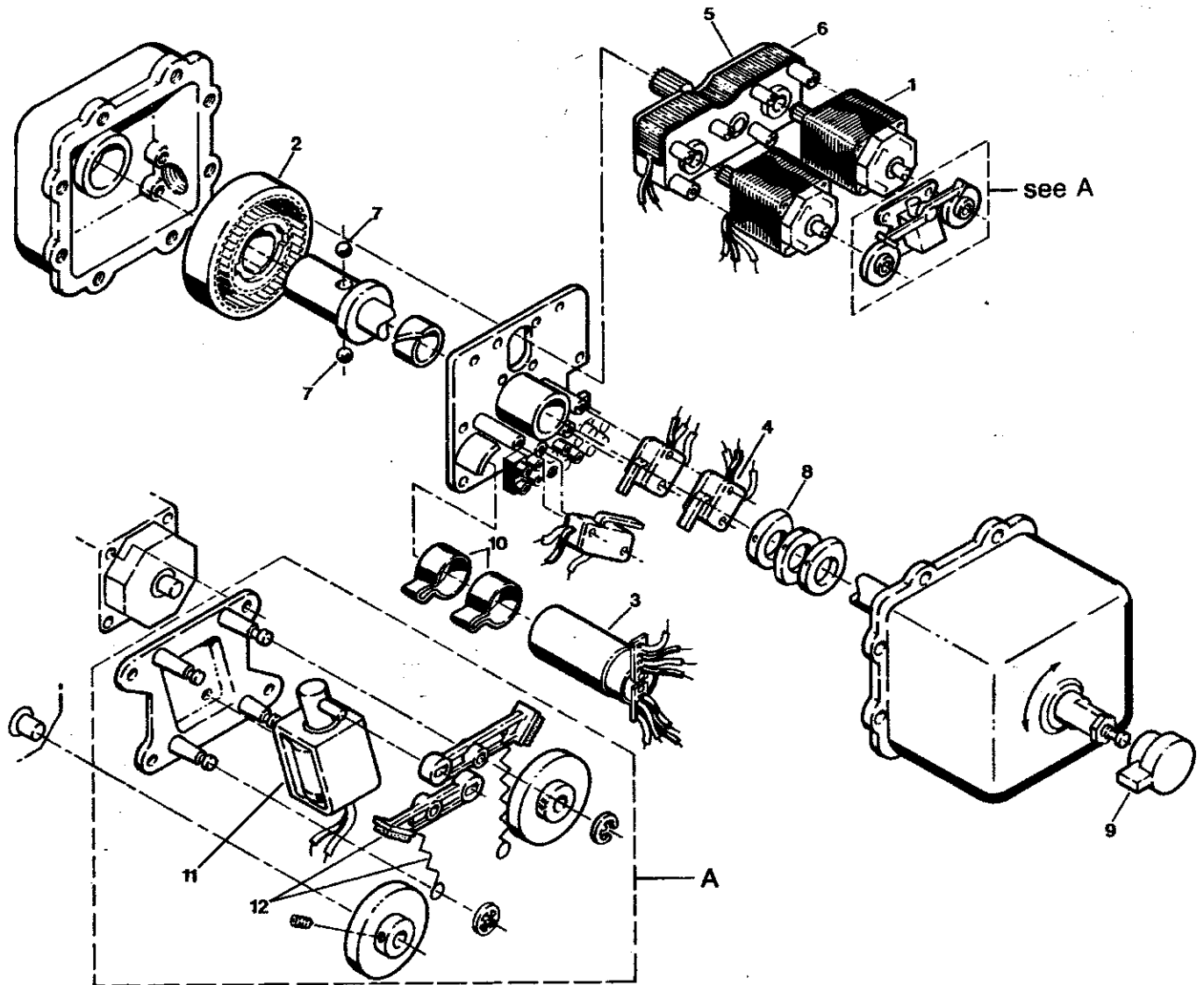
## SULLAIR B SERIES BUTTERFLY VALVE & ACTUATOR PARTS

DESCRIPTION	5" B16	6" B20	8" B25/B32S	10" B32L
ORIGINAL VALVE TO ABOUT 1988				
VALVE ONLY		242020	045629	240155
BODY SEAL KIT		001923-001	001923-002	001923-003
COMPLETE SEAL KIT		02250061-535	02250061-536	02250061-537
ACTUATOR ONLY (2 MOTORS)		045630-001	045630-001	045630-001
ACTUATOR ONLY (1 MOTOR)		045630-002	045630-002	045630-002
FROM ABOUT 1988 TO ABOUT 1993				
VALVE ONLY		250030-171	250030-172	250030-173
SEAL KIT		250039-394	250039-395	250039-396
GASKETS	240621-011	240620-012	240621-013	240621-014
VALVE W/ACTUATOR	250005-986	250005-987	250005-988	250005-989
ACTUATOR ONLY (1 MOTOR)	045630-002	045630-002	045630-002	045630-002
FROM ABOUT 1993 TO PRESENT				
VALVE ONLY	02250054-566	02250054-567	02250054-568	02250054-569
VALVE THICKNESS	2.25"	2.31"	2.50"	2.81"
PACKING	02250054-558	02250054-559	02250054-560	02250054-561
VALVE W/ACTUATOR	02250054-465	02250054-464	02250054-466	02250054-468
BRACKET/COUPLING	02250054-562	02250054-555	02250054-564	02250054-565
VALVE/ADPT/COUPLING	02250054-554	02250054-555	02250054-556	02250054-557
GASKETS	240621-011	240621-012	240621-013	240621-014
ACTUATOR	045630-002	045630-002	045630-002	045630-002

# ILLUSTRATIONS AND PARTS LISTS

## ELECTRIC VALVE ACTUATOR ASSEMBLY — "B" Series

**THIS IS THE ORIGINAL ACTUATOR (2 MOTORS)**



**THIS IS THE ORIGINAL ACTUATOR (2 MOTORS)**

**ELECTRIC VALVE ACTUATOR ASSEMBLY — "B" Series**

<i>key number</i>	<i>description</i>	<i>part number</i>	<i>quantity</i>
complete assy.	electric valve actuator — standard with male drive shaft*	45630	1
complete assy.	electric valve actuator — 4 cams and limit switches with male drive shaft*	249552	1
1	motor module (2 motors)	242322	1
2	output bull gear	242323	1
3	capacitor	242324	1
4	limit switch	242325	as required (2 min.) (4 max.)
5	base plate and gear train	407488	1
6	thermostat - heater strip	407489	2
7	detent ball	407490	4
8	cam for limit switch	407491	as required (2 min.) (4 max.)
9	override knob	407492	1
10	capacitor strap	407493	as required
11	actuator - mechanical brake	407494	1
12	mechanical brake with tension spring	407495	2

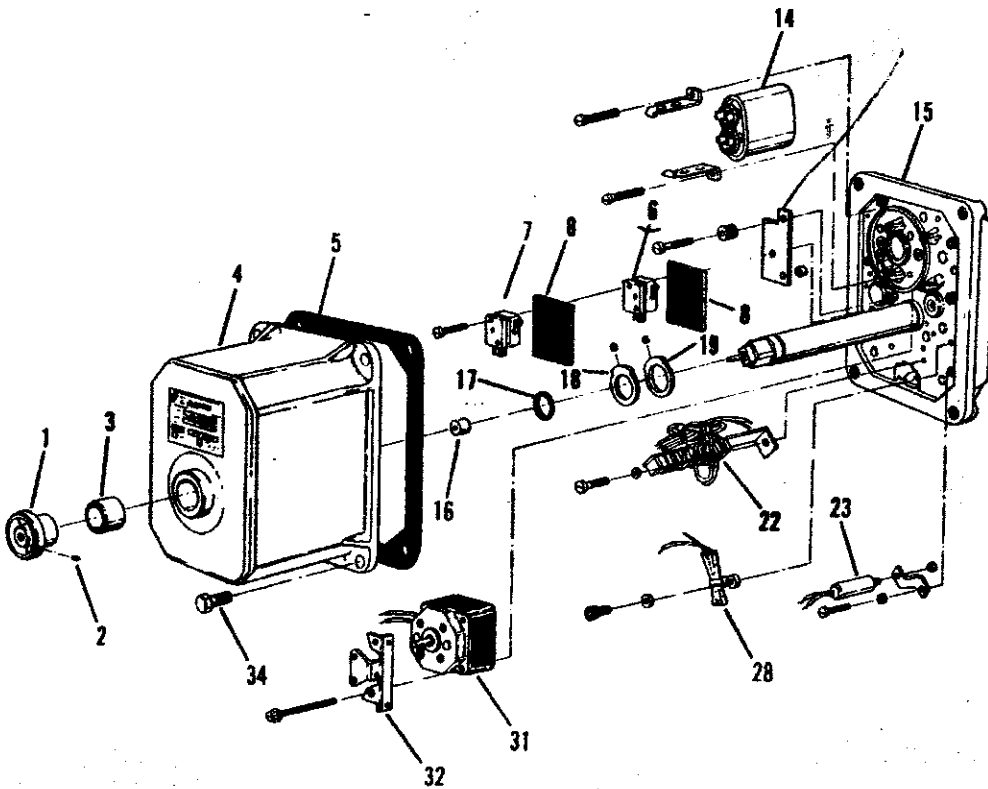
\* Earlier models have a female drive shaft configuration. Replacement with a male drive shaft E.V.A. also requires replacement of the actuator drive coupling, actuator bracket plate and actuator support bracket. Refer to page 23 for additional information.

**WHEN ORDERING PARTS, ALWAYS INDICATE SERIAL NUMBER OF MACHINE**

**ELECTRIC VALVE ACTUATOR**

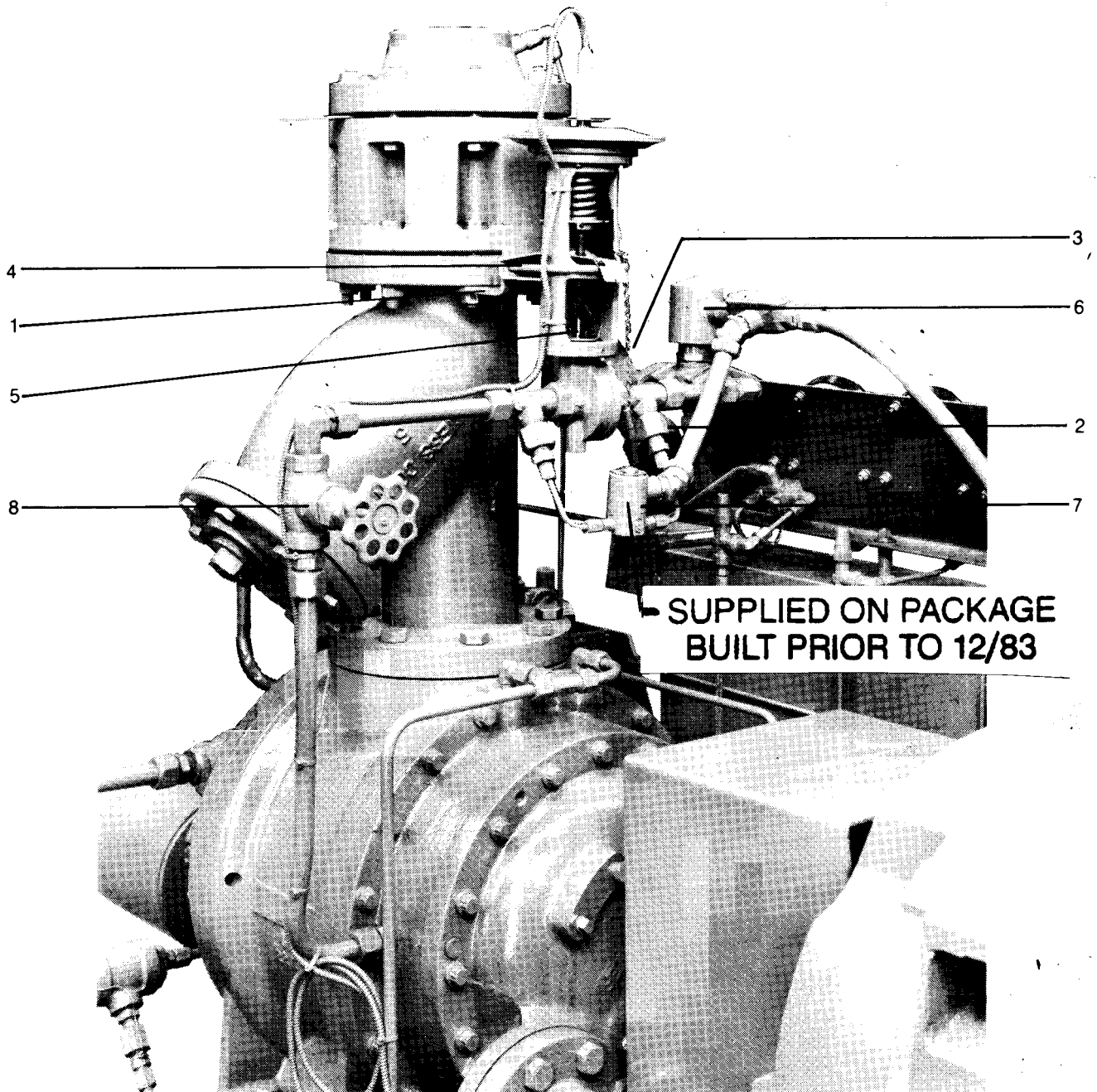
**SINGLE MOTOR ACTUATOR**

KEY NO	DESCRIPTION	PART NUMBER	QTY
1 thru 34	complete assembly	<b>046630-002</b>	1
1	handle	250014-493	1
2	setscrew		
5	gasket, cover	250014-509	1
6	switch, position minimum	250014-230	1
7-A	switch, position maximum	250014-230	1
7-B	switch, position intermediate (not shown)	250014-230	1
14	capacitor	242324	1
16	spacer		
17	O-ring, shaft	250014-510	1
18A	cam, position maximum	250024-472	1
18B	cam, position intermediate (not shown)	250005-576	1
19	cam, position minimum	250024-472	1
22	terminal, 6 point block	250014-496	1
23, 28	heater, thermostat	250024-473	1
31	motor, EVA 120V	250014-494	1



# ILLUSTRATIONS AND PARTS LISTS

## LIQUID INJECTION OPTION



## Liquid Injection Control Valves & Seat Kits

Model	Complete Valve		CV	Seat Kit Only	
	old p/n	new p/n		old p/n	new p/n
A12LB, CB12LB	241521	02250057-307	.08	241522	02250057-311
A12LA, A12LB C16LB, C20SB	240227	02250057-303	.21	240786	02250057-312
B20LB ALL C16LA, C25SB C20SA, C20LB	240039	02250057-305	.42	240143	02250057-401
B25, B32 ALL C25SA, C25LB C20LA, C25M, C40LB	240038	02250057-304	.84	240112	02250057-313
C25LA, C40LA	046452	02250057-308	1.6	240142	02250057-314
	241519	02250057-306	2.5	241520	02250057-315

Refrigerant Regulating Valve Thermal System P/N 240282

Refrigerant Regulating Valve Stem Packing P/N 240710

Bulbwell, Stainless Steel P/N 240027



**LIQUID INJECTION OPTION**

<i>key number</i>	<i>description</i>	<i>equipment package model number</i>	<i>part no.</i>	<i>quantity</i>
1	regulator bracket	B20LB all	220167	1
		B25, B32 all	220168	1
2	strainer (complete)	B20LB all, B25, B32 all	46186	1
	replacement parts: screen		248018-002	
	gasket		248016-002	
	cover		248017-002	
3	strainer bracket	all	220172	1
4	clamp (3 1/2")	all	40284	1
5	refrigerant regulator (complete)	B20LB all	240039	1
		B25, B32 all	240038	1
	replacement parts: regulator seats	B20LB all	240143	1
		B25, B32 all	240112	1
	regulator thermal system	all	240282	1
	regulator packing	all	240710	1
6	liquid refrigerant solenoid	all	46185	1
7	by-pass solenoid	all	240037	1
8	globe valve 3/4"	all	46116	1
9	bulb well (not shown)*	all	240027	1
10	thermistor (not shown)*	all	46521	1
11	relay (not shown)**	all	45496	1
12	socket (not shown)**	all	46497	1
13	low discharge temperature controller (not shown)**	all	46546	1

\* Mounted in discharge pipe (compressor to separator).

\*\* Mounted in panel for thermistor.

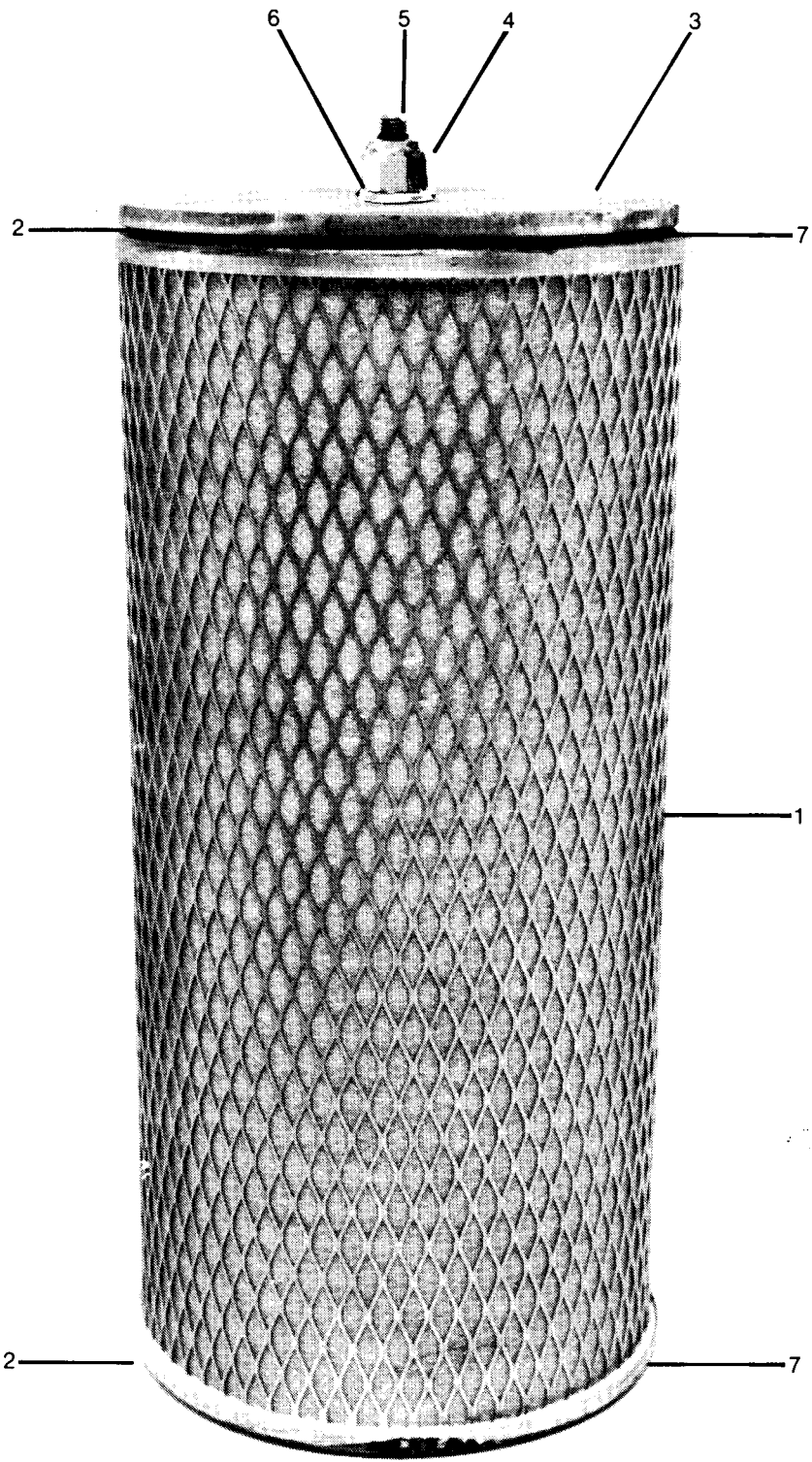
**WHEN ORDERING PARTS, ALWAYS INDICATE SERIAL NUMBER OF MACHINE**

*4/17/91*

# ILLUSTRATIONS AND PARTS LISTS

## GAS/OIL SEPARATOR ELEMENT ASSEMBLY

NOTE: Mounting arrangement for B20LB 400-417 packages. Balance of "B" Series packages use multiple element mounting in the same manner.



**B SERIES GAS/OIL SEPARATOR ELEMENTS**

**B16LB USES (1) 20" ELEMENT P/N 044038**

**B25LB SHOULD USE (2) 33" ELEMENTS P/N 044306 & (1) 26"  
ELEMENT P/N 043930**

**B32SB & B32LB SHOULD USE (3) 33" ELEMENTS P/N 044306**

**SEPARATOR COVER GASKET P/N 240177**

**GAS/OIL SEPARATOR ELEMENT ASSEMBLY**

<i>key no.</i>	<i>description</i>	<i>package model no.</i>	<i>hgt.</i>	<i>60 Hertz part no.</i>	<i>qty.</i>
1	gas/oil separator element	B20LB 400-417	26"	43930	1
		B20LB 200-236	26"	43930	2
		B20LB 436-494	26"	43930	2
		B25	26"	43930	2
			20"	44038	1
	B32SB, B32LB	26"	43930	3	
2	gasket**	all		26427	2 per ele.
3	cover plate	all		24371	1 per ele.
4	nut, locking 1/2-13 UNC	all		241451	1 per ele.
				part of oil separator tank	1 per ele.
5	rod 1/2-13 UNC	all		837208-112*	1 per ele.
6	washer, flat 1/2"	all		240179	1
7	gasket, adhesive***	all			

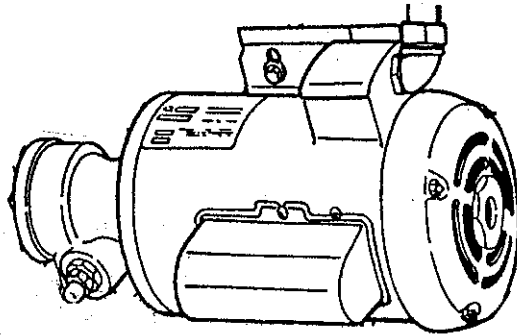
\* Standard hardware item, may be purchased locally.

\*\* Gaskets come with all new elements. (Cemented to both ends).

\*\*\* Use Sullair P/N 240179 Gasket Adhesive or Loctite no. 04E or Loctite no. 404.

**WHEN ORDERING PARTS, ALWAYS INDICATE SERIAL NUMBER OF MACHINE**

## 3/4 HP AUX OIL PUMP



P/N 045625, PUMP & 3/4 HP MOTOR COMPLETE

P/N 240870, PUMP ONLY (CCW ROTATION)

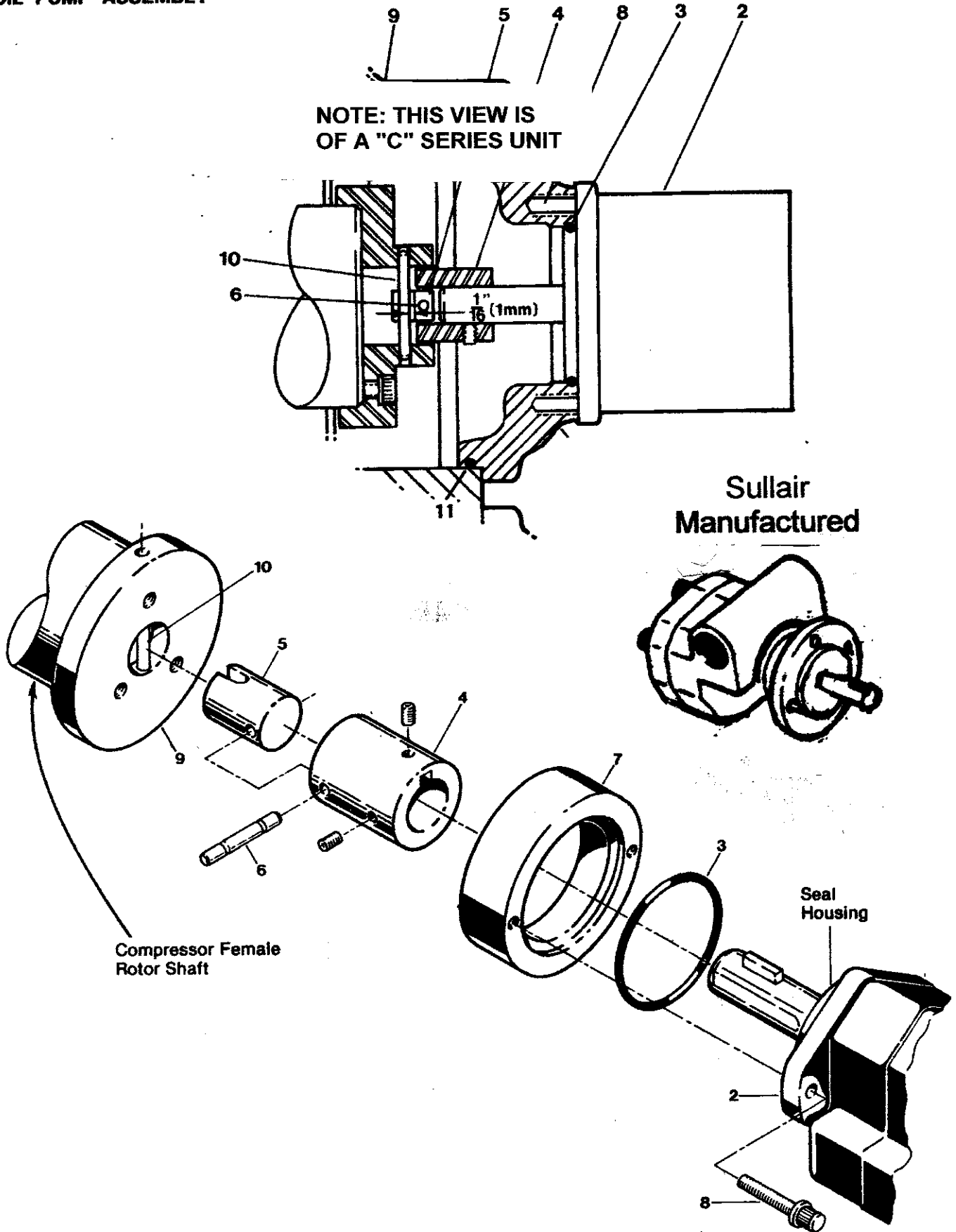
P/N 050484, 3/4 HP MOTOR ONLY

P/N 240317, PUMP SHAFT SEAL ONLY

P/N 250026-891, COUPLING FOR MOTOR/PUMP

# ILLUSTRATIONS AND PARTS LISTS

## OIL PUMP ASSEMBLY



B20 GEAR DRIVE UNITS WITH P/N'S 02250086-138 AND OTHERS IN THIS ERA HAVE THREE PUMP O-RINGS.

THESE COMPRESSOR UNITS USE THREE DIFFERENT O-RINGS TO SEAL THE OIL PUMP THROUGH TO THE OUTLET HOUSING.

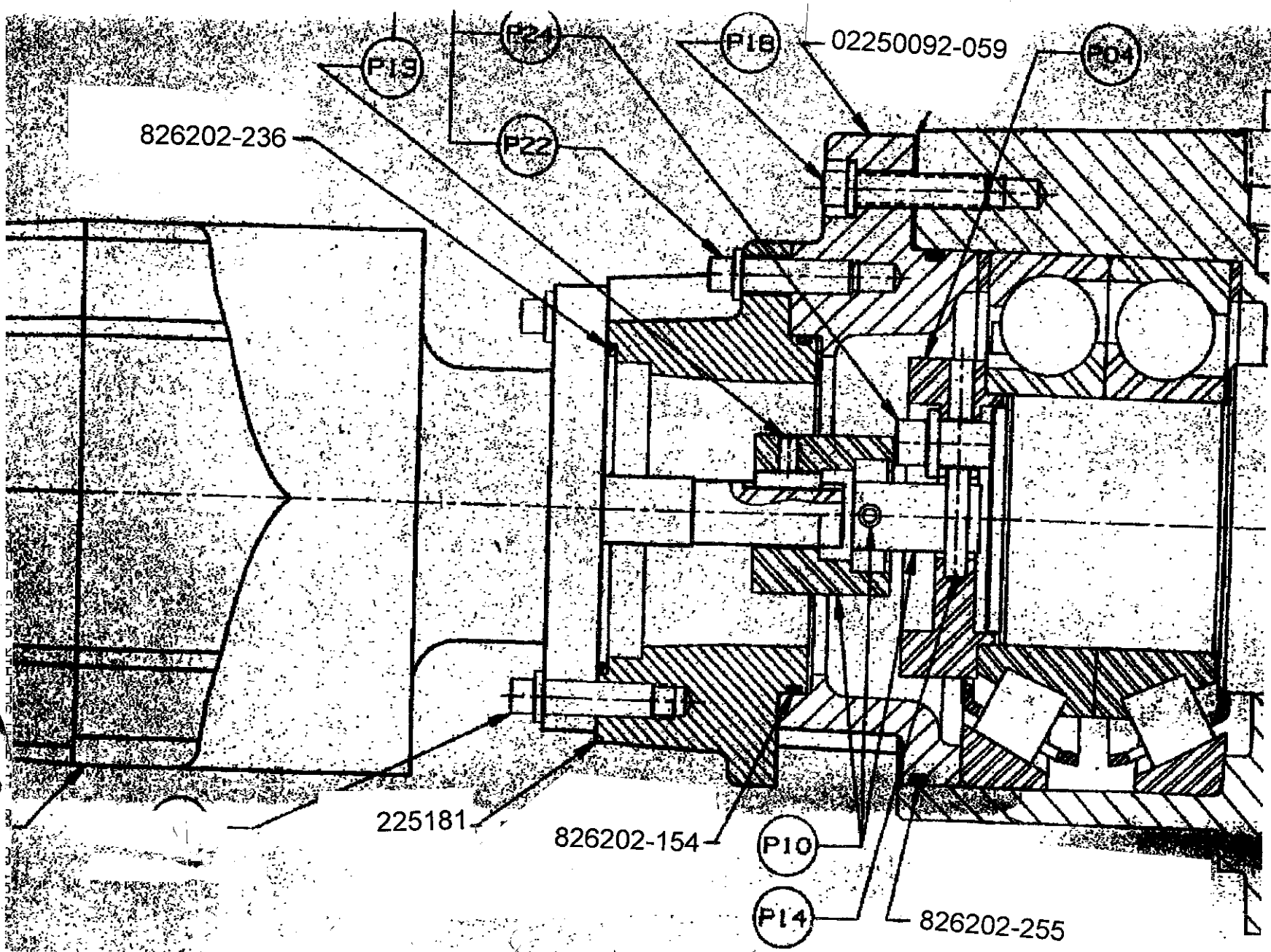
1 - P/N 826202-236, O-RING IS LOCATED BETWEEN THE OIL PUMP AND THE OIL PUMP ADAPTER

1 - P/N 826202-154, O-RING IS LOCATED BETWEEN THE OIL PUMP ADAPTER AND THE OUTLET HOUSING BEARING COVER

1 - P/N 826202-255, O-RING IS LOCATED BETWEEN THE BEARING COVER AND THE OUTLET HOUSING

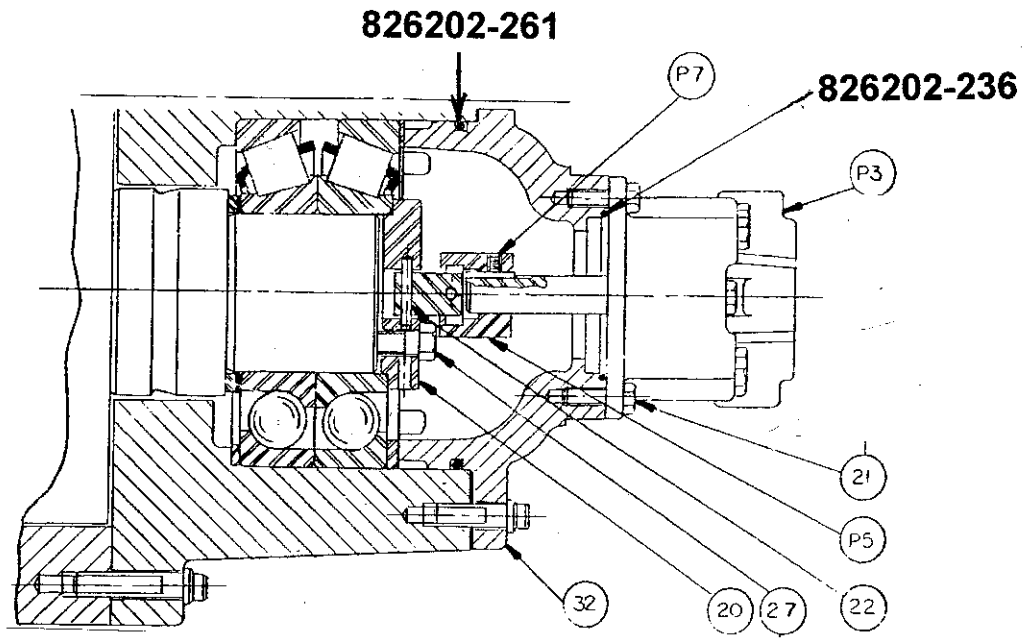
REMOVAL OF THE OUTLET BEARING COVER WILL EXPOSE THE SHIMS USED TO SET THE OUTLET BEARING END PLAY. THESE SHIMS ARE FOUND BETWEEN THE BEARING COVER AND THE OUTLET HOUSING. WITH THIS PART REMOVED YOU WILL EXPOSE THE OUTBOARD BEARING ON THE ROTOR.

THIS MODEL HAS NO SEALANT OR GASKETS USED IN THIS STACK UP OF PARTS.

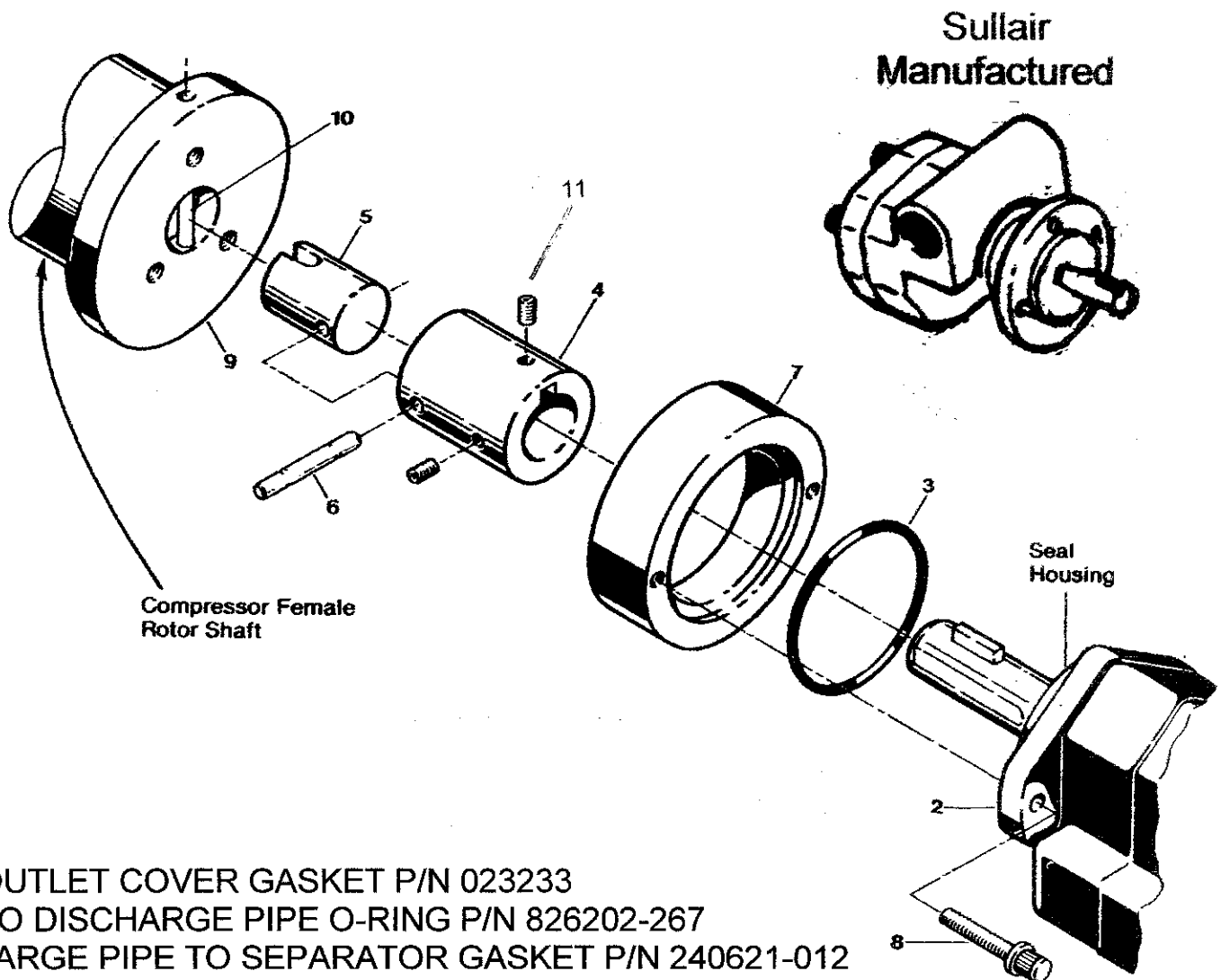




# B25 OIL PUMP INFO



## B32 OIL PUMP PARTS



UNIT OUTLET COVER GASKET P/N 023233  
UNIT TO DISCHARGE PIPE O-RING P/N 826202-267  
DISCHARGE PIPE TO SEPARATOR GASKET P/N 240621-012

- 1 - B32 OIL PUMP REPLACEMENT KIT P/N 001806A, NOTE THIS OIL PUMP P/N 018890B SHOULD HAVE LIP SEAL P/N 240313 INSTALLED.
- 2 - SULLAIR MANUFACTURED OIL PUMP P/N 018890B
- 3 - O-RING P/N 826202-236
- 4 - DRIVE HUB P/N 220846
- 5 - CONNECTOR P/N 220130
- 6 - SHEAR PIN P/N 827504-175
- 7 - ADAPTER P/N 220131, THIS IS INSTALLED FROM THE INSIDE OF THE COVER USING LOCTITE 515 AS SEALANT
- 8 - FERRY HEAD CAPSCREW, 3/8" -16 X 1", P/N 828406-100
- 9 - DRIVE DISC P/N 250006-923
- 10 - DRIVE PIN P/N 827204-125
- 11 - SET SCREWS, 1/4"-20 X 3/8", P/N 832204-038

OIL PUMP ASSEMBLY

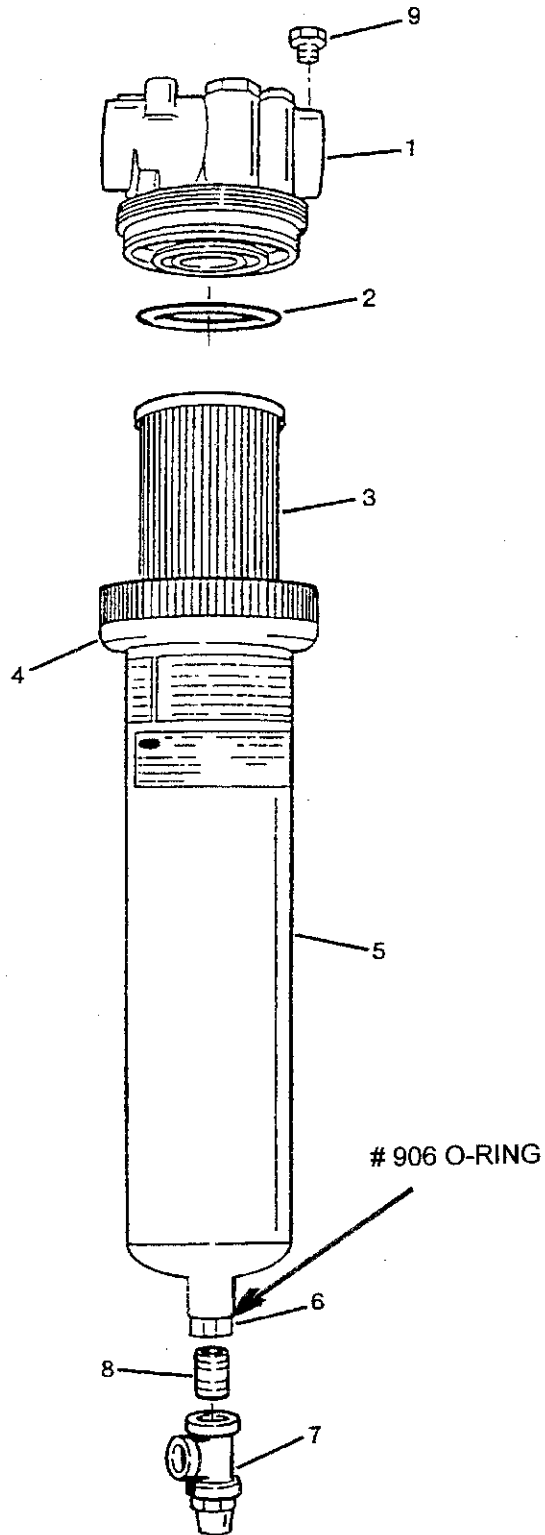
key number	description	part number	quantity
1	oil pump replacement kit B20LB all (includes key no's 2, 3, 4, 5 and 6)	<u>Call with compressor part #</u>	1
	oil pump replacement kit B25 (includes key no.'s 2, 3, 4, 5 and 6)	<u>Call with compressor part #</u>	1
	oil pump replacement kit B32 all (includes key no.'s 2, 3, 4, 5 and 6)	<u>Call with compressor part #</u>	1
2	oil pump B20LB all	<u>Call with compressor part #</u>	1
	B25	<u>Call with compressor part #</u>	1
	B32 all	<u>Call with compressor part #</u>	1
3	o ring	826202-236	1
4	drive hub	220846	1
5	connector B20LB all	225183	1
	B25, B32 all	220130	1
6	shear pin	220847	1
7	adaptor B20LB all	225181	1
	B25	225002	1
	B32 all	220131	1
8	ferry head capscrews, oil pump to adaptor 3/8-16 UNC x 1" lg.	828406-100*	2
9	drive disc B20LB all	225182	1
	B25	225001	1
	B32 all	220127	1
10	dowel pin B20LB all, B32 all	827204-125	1
	B25	827204-187	1
11	o ring B20LB all	826202-154	1
	B25, B32 all	826202-042	1

\* Standard hardware item, may be purchased locally.

WHEN ORDERING PARTS, ALWAYS INDICATE SERIAL NUMBER OF MACHINE

# Section 1 ILLUSTRATIONS AND PARTS LIST

## 1.3 SINGLE FILTER ASSEMBLY



# ILLUSTRATIONS AND PARTS LIST

## 1.3 SINGLE FILTER ASSEMBLY

<i>key number</i>	<i>description</i>	<i>part number</i>	<i>quantity</i>
1	filter, head (I)	N/A	1
2	o-ring, oil filter canister (I) (II)	826202-153	1
3	element, oil filter (I)	250008-955	1
4	ring, rotolock - oil filter (I)	250033-099	1
5	canister, oil filter (I)	250033-101	1
6	adaptor, oil filter drain $\frac{3}{8}$ " x $\frac{1}{4}$ "	250009-865	1
7	valve, oil filter drain $\frac{1}{4}$ "	044996	1
8	nipple, pipe - oil filter $\frac{1}{4}$ "	822204-000	1
9	adaptor, oil filter pressure port	250009-864	1
11	assembly, filter (complete)	250008-954	1

(I) Included within the complete filter assembly. (Key No. 11)

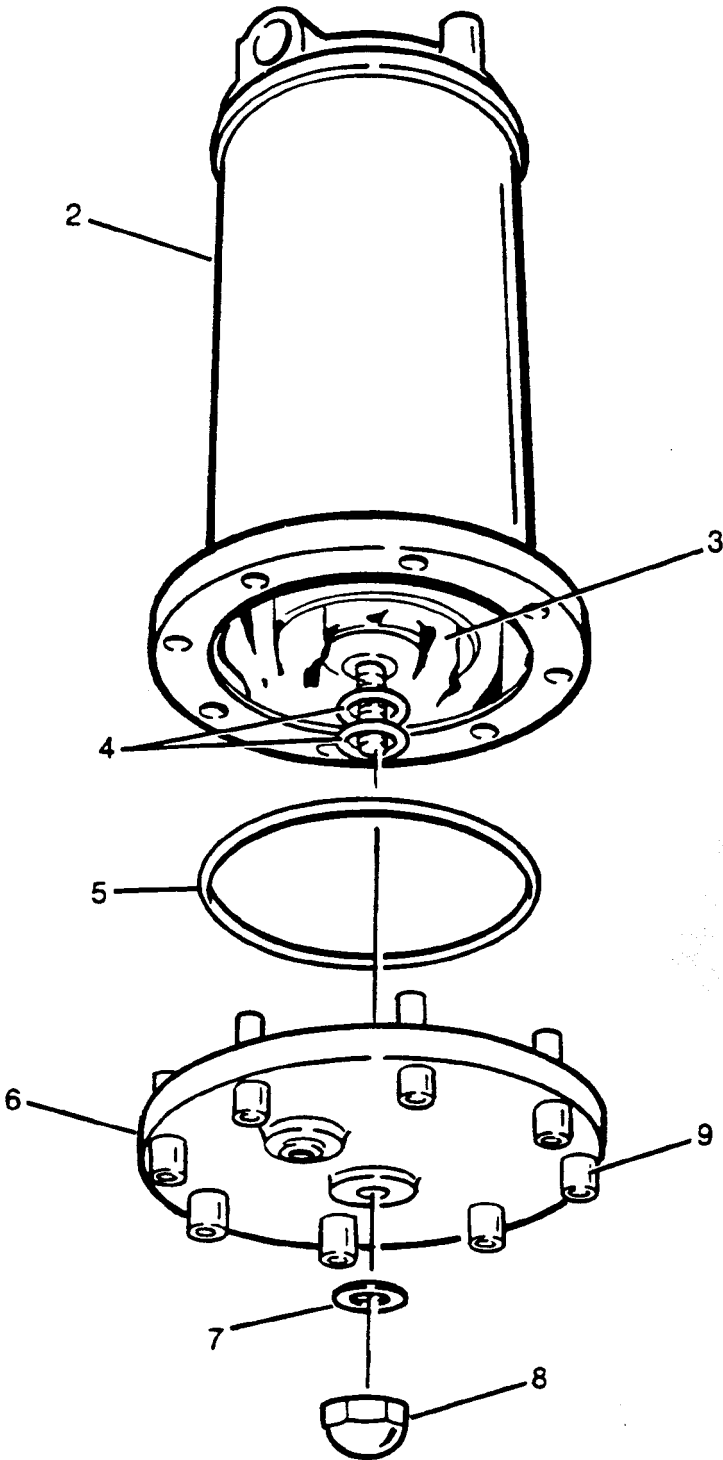
(II) Included with oil filter element (Key No. 3).

---

**PLEASE NOTE: WHEN ORDERING PARTS, INDICATE SERIAL NUMBER OF COMPRESSOR**

# ILLUSTRATIONS AND PARTS LIST

SINGLE FILTER ASSEMBLY (Prior to December, 1984)



**ILLUSTRATIONS AND PARTS LIST****1.4 SINGLE FILTER ASSEMBLY (Prior to December, 1984)**

<i>key number</i>	<i>description</i>	<i>part number</i>	<i>quantity</i>
1	filter assembly (complete) (Key 2-9)	042463	1
2	housing, oil filter	N/A	1
3	cartridge, filter element	042712	1
4	washer, felt (I)	N/A	2
5	o-ring, oil filter (I)	826202-259	1
6	cover, oil filter	N/A	1
7	washer, fiber - oil filter nut (I)	N/A	1
8	nut, oil filter cover - cap	N/A	1
9	screw, hex socket head 1/2"-20 X 1-1/2" (II)		8

---

(I) Included within the filter element cartridge (Key No. 3).

(II) Standard hardware item, may be purchased locally.

---

**PLEASE NOTE: WHEN ORDERING PARTS, INDICATE SERIAL NUMBER OF COMPRESSOR**

**7.0 = COMMUTER VALVE  
SULLAIR P/N 250033-097**

**9.1 = O-RING  
1300093-908**

**9.7 = O-RING  
1300091-014**

**STEM O-RING  
1300096-008  
Maybe 2 required**

**Valve Stem**

**COMMUTER VALVE  
SCREWED DOWN IS CLOSED**

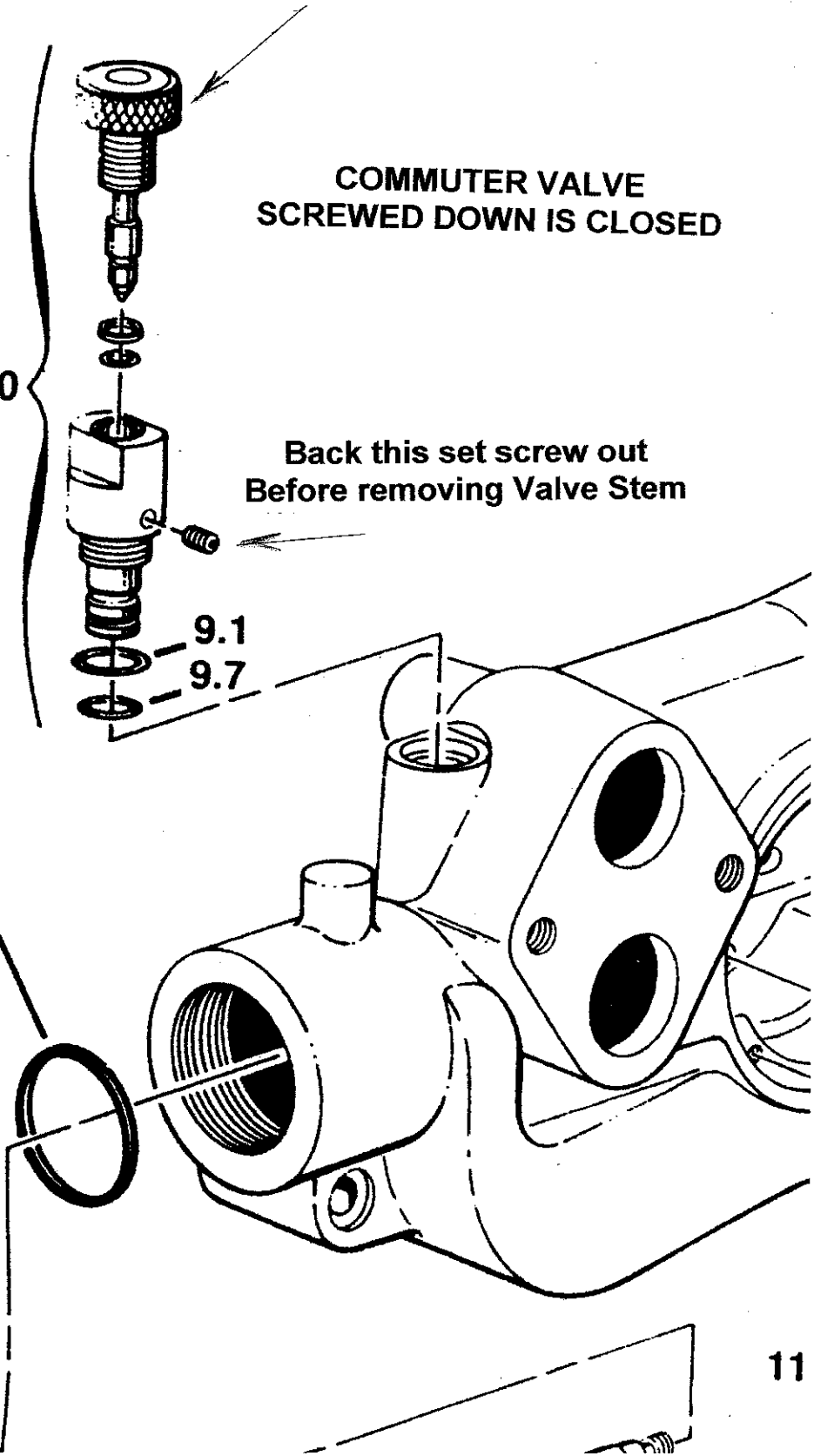
**Back this set screw out  
Before removing Valve Stem**

7.0

9.1

9.7

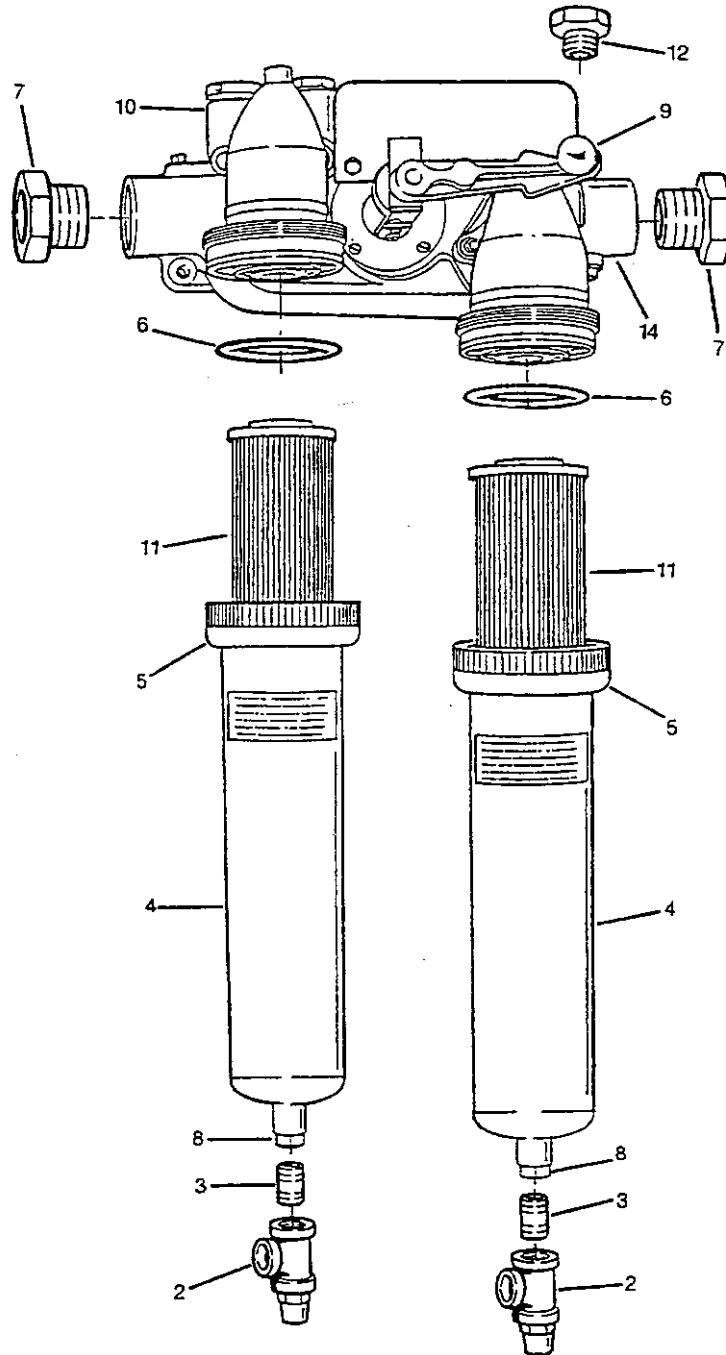
9.2





# Section 1 ILLUSTRATIONS AND PARTS LIST

## 1.5 DUPLEX FILTER ASSEMBLY



## ILLUSTRATIONS AND PARTS LIST

## 1.5 DUPLEX FILTER ASSEMBLY

<i>key number</i>	<i>description</i>	<i>part number</i>	<i>quantity</i>
1	duplex filter assembly (complete)	250008-953	1
2	valve, oil filter drain $\frac{1}{4}$ "	044996	2
3	nipple, pipe oil filter $\frac{1}{4}$ "	822204-000	2
4	canister, oil filter (I)	250033-101	1
5	ring, rotolock - oil filter (I)	250033-099	1
6	o-ring, oil filter canister (I) (II)	826202-153	2
7	adaptor, oil filter	250009-872	2
8	adaptor, oil filter drain $\frac{3}{8}$ " x $\frac{1}{4}$ "	250009-865	1
9	handle, duplex filter valve (I)	250033-098	1
10	valve, commuter (I)	250033-097	1
11	element, oil filter (I)	250008-955	2
12	adaptor, oil filter pressure	250009-864	1
14	valve, oil filter transfer (I)	-----	1

(I) Included within the complete filter assembly (Key No. 1).

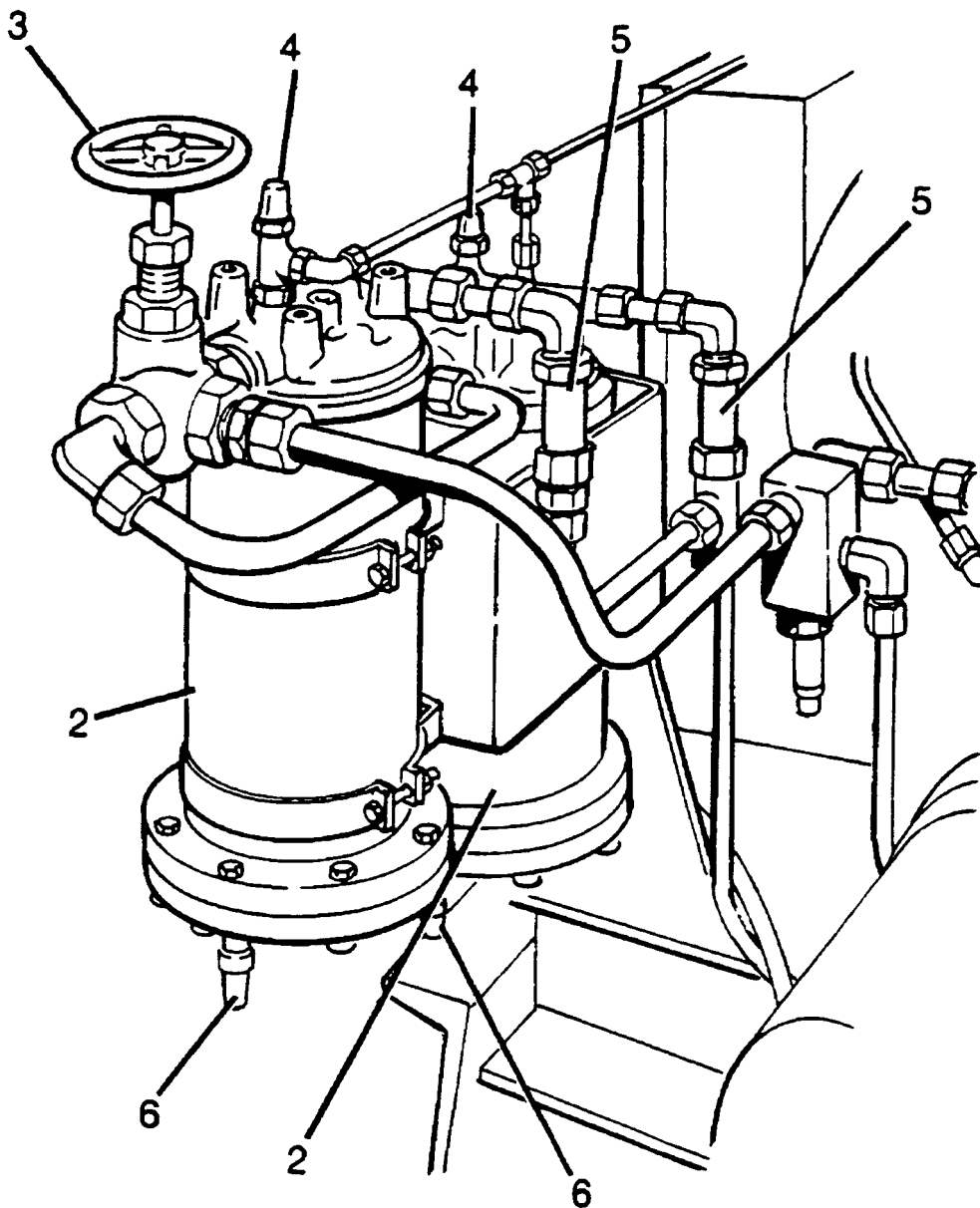
(II) Included with filter element (Key No. 11).

---

PLEASE NOTE: WHEN ORDERING PARTS, INDICATE SERIAL NUMBER OF COMPRESSOR

Section 1  
**ILLUSTRATIONS AND PARTS LIST**

1.6 DUAL FILTER ASSEMBLY (Prior to December, 1984)



# ILLUSTRATIONS AND PARTS LIST

## 1.6 DUAL FILTER ASSEMBLY (Prior to December, 1984)

<i>key number</i>	<i>description</i>	<i>part number</i>	<i>quantity</i>
1	dual filter assembly (complete)	N/A	1
2	filter, oil (Key 2-9, Section 1.3)	042463	2
3	valve, 3-way	043436	1
4	valve, angle seal cap $\frac{1}{4}$ "	044996	2
5	valve, check $\frac{3}{4}$ "	042615	2
6	valve, angle seal cap $\frac{3}{8}$ "	044997	2

See Section 1.4 for internal parts.

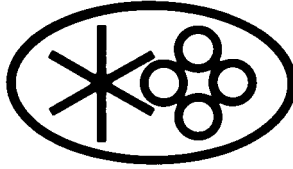
---

**PLEASE NOTE: WHEN ORDERING PARTS, INDICATE SERIAL NUMBER OF COMPRESSOR**

---

**SULLAIR REFRIGERATION**

3700 East Michigan Blvd., Michigan City, Indiana 46360, USA  
Phone: (219) 879-5451 Telex: 258411



**Printed in U.S.A. Effective 3/81**

Specifications subject to change  
without prior notice

Form No. P00205